

PACO29100

---

## Product Information

**Size:**

50ug

**Reactivity:**

Human

**Source:**

Rabbit

**Isotype:**

IgG

**Applications:**

ELISA, WB, IHC, IF

**Recommended dilutions:**

ELISA:1:2000-1:10000, WB:1:500-1:2000,  
IHC:1:20-1:200, IF:1:50-1:200

**Protein Background:**

Catalyzes the conversion of phosphatidic acid, (PA) to diacylglycerol (DG). In addition it hydrolyzes lysophosphatidic acid, (LPA), ceramide-1-phosphate (C-1-P) and sphingosine-1-phosphate (S-1-P). The relative catalytic efficiency is PA > C-1-P > LPA > S-1-P.

**Gene ID:**

PLPP2

**Uniprot**

O43688

**Synonyms:**

Phospholipid phosphatase 2 (EC 3.1.3.4) (Lipid phosphate phosphohydrolase 2) (PAP2-gamma) (PAP2-G) (Phosphatidate phosphohydrolase type 2c) (Phosphatidic acid, phosphatase 2c) (PAP-2c) (PAP2c), PLPP2, LPP2 PPAP2C

**Immunogen:**

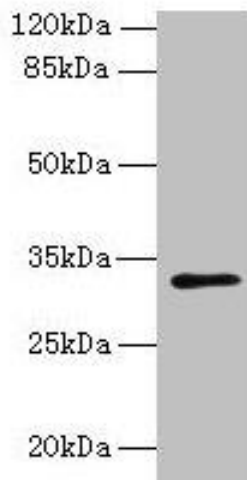
Recombinant Human Phospholipid phosphatase 2 protein (109-162AA).

**Storage:**

Preservative: 0.03% Proclin 300. Constituents: 50% Glycerol, 0.01M PBS, PH 7.4

## Product Images

---



### Western blot

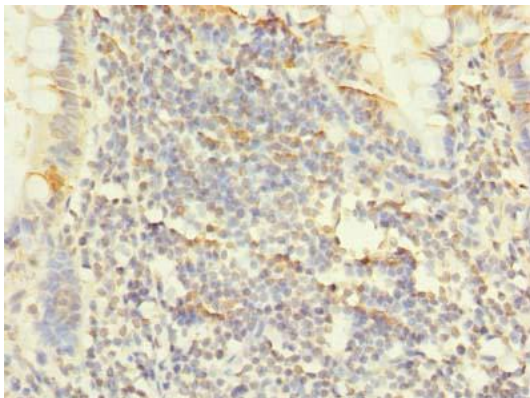
All lanes: PLPP2 antibody at 8 $\mu$ g/ml + MCF-7 whole cell lysate

Secondary

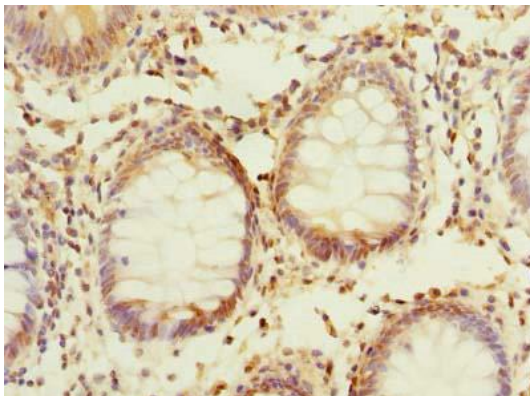
Goat polyclonal to rabbit IgG at 1/10000 dilution

Predicted band size: 33, 35, 27 kDa

Observed band size: 33 kDa



Immunohistochemistry of paraffin-embedded human small intestine tissue using PACO29100 at dilution of 1:100.



Immunohistochemistry of paraffin-embedded human colon cancer using PACO29100 at dilution of 1:100.