

PACO28862

---

## Product Information

**Size:**

50ug

**Reactivity:**

Escherichia coli

**Source:**

Rabbit

**Isotype:**

IgG

**Applications:**

ELISA, WB

**Recommended dilutions:**

ELISA:1:2000-1:10000, WB:1:1000-1:5000

**Protein Background:**

Removes the formyl group from the N-terminal Met of newly synthesized proteins. Requires at least a dipeptide for an efficient rate of reaction. N-terminal L-methionine is a prerequisite for activity but the enzyme has broad specificity at other positions.

**Gene ID:**

def

**Uniprot**

P0A6K3

**Synonyms:**

Peptide deformylase (PDF) (EC 3.5.1.88) (Polypeptide deformylase), def, fms

**Immunogen:**

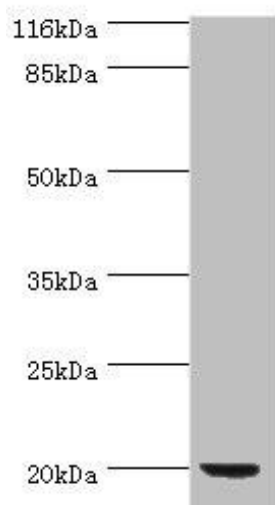
Recombinant Escherichia coli Peptide deformylase protein (2-169AA).

**Storage:**

Preservative: 0.03% Proclin 300. Constituents: 50% Glycerol, 0.01M PBS, PH 7.4

## Product Images

---



### Western blot

All lanes: def antibody at 2 $\mu$ g/ml + DH5alpha whole cell lysate

Secondary

Goat polyclonal to rabbit IgG at 1/10000 dilution

Predicted band size: 20 kDa

Observed band size: 20 kDa

.