

Product Information

Size:

50ug

Reactivity:

Human, Mouse

Source:

Rabbit

Isotype:

IgG

Applications:

ELISA, WB, IHC

Recommended dilutions:

ELISA:1:2000-1:10000, WB:1:500-1:2000,
IHC:1:20-1:200

Protein Background:

cytoplasm, extracellular exosome, maintenance of gastrointestinal epithelium, negative regulation of epithelial cell migration, negative regulation of epithelial cell proliferation, negative regulation of epithelial to mesenchymal transition, negative regulation of pathway-restricted SMAD protein phosphorylation, negative regulation of SMAD protein import into nucleus, negative regulation of transforming growth factor beta receptor signaling pathway.

Gene ID:

PBLD

Uniprot

P30039

Synonyms:

Phenazine biosynthesis-like domain-containing protein (EC 5.1. -. -) (MAWD-binding protein) (MAWDBP) (Unknown protein 32 from 2D-page of liver tissue), PBLD, MAWBP

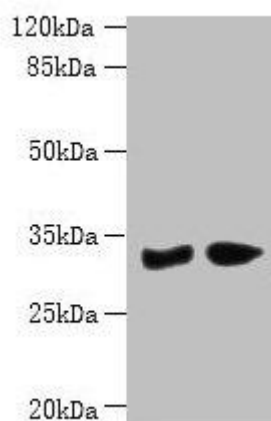
Immunogen:

Recombinant Human Phenazine biosynthesis-like domain-containing protein (11-288AA).

Storage:

Preservative: 0.03% Proclin 300. Constituents: 50% Glycerol, 0.01M PBS, PH 7.4

Product Images



Western blot

All lanes: PBLD antibody at 6 μ g/ml

Lane 1: Mouse liver tissue

Lane 2: Mouse kidney tissue

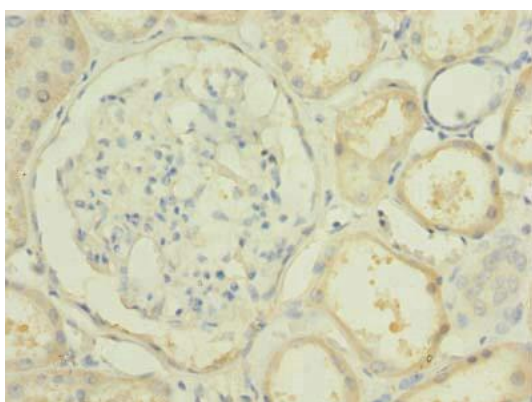
Secondary

Goat polyclonal to rabbit IgG at 1/10000 dilution

Predicted band size: 32 kDa

Observed band size: 32 kDa

.



Immunohistochemistry of paraffin-embedded human kidney tissue using PACO28822 at dilution of 1:100.