

# BUD31 Antibody



PACO28818

---

## Product Information

**Size:**

50ug

**Reactivity:**

Human, Mouse

**Source:**

Rabbit

**Isotype:**

IgG

**Applications:**

ELISA, WB, IHC, IF

**Recommended dilutions:**

ELISA:1:2000-1:10000, WB:1:500-1:2000,  
IHC:1:20-1:200, IF:1:50-1:200

**Protein Background:**

nucleus, spliceosomal complex, ligand-dependent nuclear receptor transcription coactivator activity, nuclear hormone receptor binding, transcription factor activity, sequence-specific DNA binding, mRNA splicing, via spliceosome, positive regulation of androgen receptor activity, regulation of transcription from RNA polymerase II promoter.

**Gene ID:**

BUD31

**Uniprot**

P41223

**Synonyms:**

Protein BUD31 homolog (Protein EDG-2) (Protein G10 homolog), BUD31, EDG2

**Immunogen:**

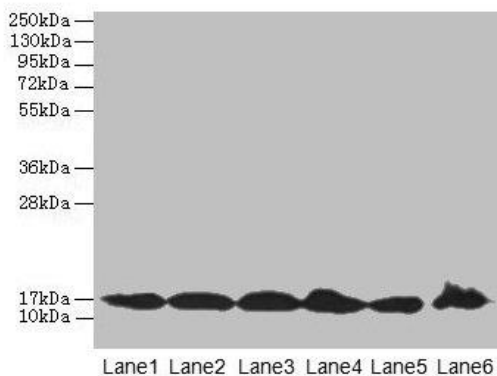
Recombinant Human Protein BUD31 homolog protein (1-144AA).

**Storage:**

Preservative: 0.03% Proclin 300. Constituents: 50% Glycerol, 0.01M PBS, PH 7.4

## Product Images

---



### Western blot

All lanes: BUD31 antibody at 5 $\mu$ g/ml

Lane 1: Jurkat whole cell lysate

Lane 2: Raji whole cell lysate

Lane 3: NIH/3T3 whole cell lysate

Lane 4: K562 whole cell lysate

Lane 5: HepG2 whole cell lysate

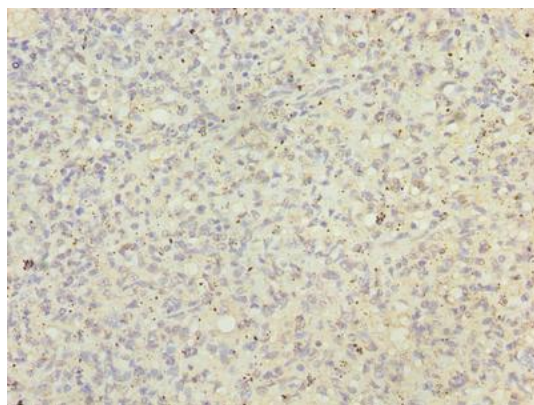
Lane 6: U251 whole cell lysate

Secondary

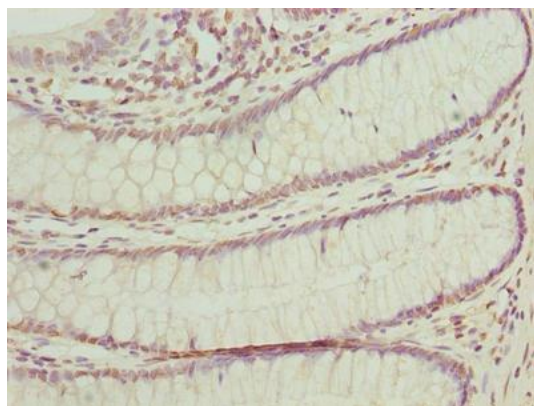
Goat polyclonal to rabbit IgG at 1/10000 dilution

Predicted band size: 17, 18 kDa

Observed band size: 17 kDa



Immunohistochemistry of paraffin-embedded human spleen tissue using PACO28818 at dilution of 1:100.



Immunohistochemistry of paraffin-embedded human colon cancer using PACO28818 at dilution of 1:100.