

PACO28746

Product Information

Size:

50ug

Reactivity:

Human

Source:

Rabbit

Isotype:

IgG

Applications:

ELISA, IHC, IF

Recommended dilutions:

ELISA:1:2000-1:10000, IHC:1:20-1:200,
IF:1:50-1:200

Protein Background:

NDUFA1 (NADH dehydrogenase (ubiquinone) 1 alpha subcomplex, 1) is an essential component of the multisubunit NADH ubiquinone oxidoreductase (complex 1), the first enzyme complex in the mitochondrial respiratory chain. Complex I transfers electrons from NADH to the respiratory chain via ubiquinone.

Gene ID:

NDUFA1

Uniprot

O15239

Synonyms:

NADH dehydrogenase [ubiquinone] 1 alpha subcomplex subunit 1 (Complex I-MWFE) (CI-MWFE) (NADH-ubiquinone oxidoreductase MWFE subunit), NDUFA1

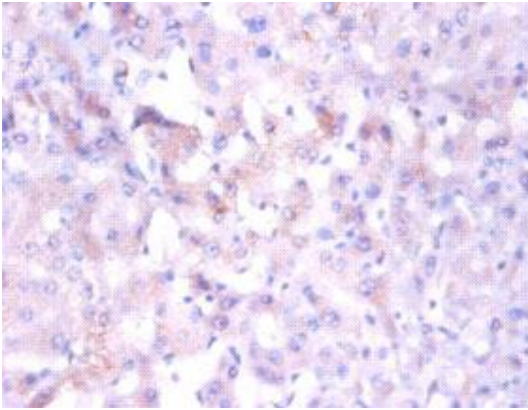
Immunogen:

Recombinant Human NADH dehydrogenase [ubiquinone] 1 α subcomplex subunit 1 protein (1-70AA).

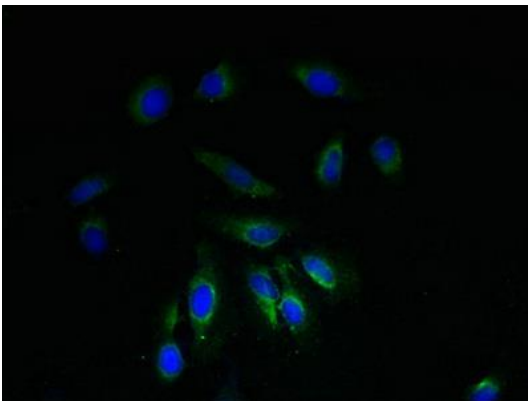
Storage:

Preservative: 0.03% Proclin 300. Constituents: 50% Glycerol, 0.01M PBS, PH 7.4

Product Images



Immunohistochemistry of paraffin-embedded human liver tissue using PACO28746 at dilution of 1:100.



Immunofluorescent analysis of HeLa cells using PACO28746 at dilution of 1:100 and Alexa Fluor 488-conjugated AffiniPure Goat Anti-Rabbit IgG(H+L).