

NXPH2 Antibody



PACO28690

Product Information

Size:

50ug

Reactivity:

Human

Source:

Rabbit

Isotype:

IgG

Applications:

ELISA, IHC

Recommended dilutions:

ELISA:1:2000-1:10000, IHC:1:20-1:200

Protein Background:

May be signaling molecules that resemble neuropeptides and that act by binding to alpha-neurexins and possibly other receptors.

Gene ID:

NXPH2

Uniprot

O95156

Synonyms:

Neurexophilin-2, NXPH2, NPH2

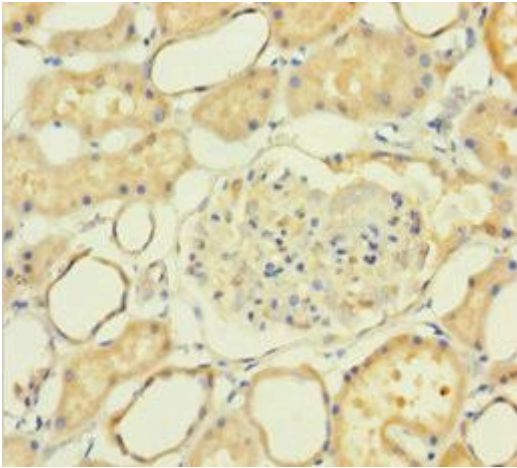
Immunogen:

Recombinant Human Neurexophilin-2 protein (23-264AA).

Storage:

Preservative: 0.03% Proclin 300. Constituents: 50% Glycerol, 0.01M PBS, PH 7.4

Product Images



Immunohistochemistry of paraffin-embedded human kidney tissue using PACO28690 at dilution of 1:100.