

PACO28686

---

## Product Information

**Size:**

50ug

**Reactivity:**

Human

**Source:**

Rabbit

**Isotype:**

IgG

**Applications:**

ELISA, WB, IHC, IF

**Recommended dilutions:**

ELISA:1:2000-1:10000, WB:1:500-1:2000,  
IHC:1:20-1:200, IF:1:50-1:200

**Protein Background:**

Could be involved in the export of mRNA from the nucleus to the cytoplasm. Could also have a role in polarized cytoplasmic transport and localization of mRNA in neurons.

**Gene ID:**

NXF5

**Uniprot**

Q9H1B4

**Synonyms:**

Nuclear RNA export factor 5 (TAP-like protein 1) (TAPL-1), NXF5, TAPL1

**Immunogen:**

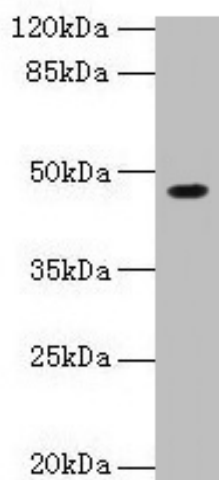
Recombinant Human Nuclear RNA export factor 5 protein (1-200AA).

**Storage:**

Preservative: 0.03% Proclin 300. Constituents: 50% Glycerol, 0.01M PBS, PH 7.4

## Product Images

---



### Western blot

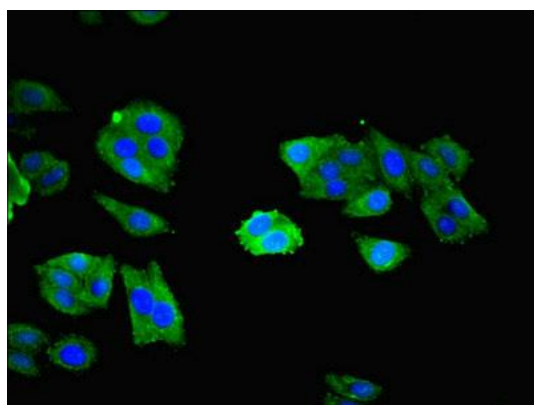
All lanes: NXF5 antibody at 4 $\mu$ g/ml + HL60 whole cell lysate

Secondary

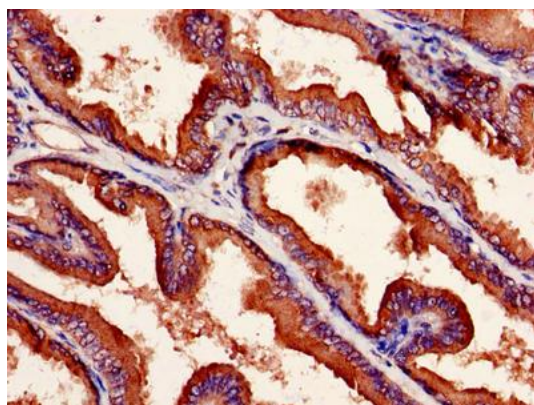
Goat polyclonal to rabbit IgG at 1/10000 dilution

Predicted band size: 46, 43, 20, 36, 35 kDa

Observed band size: 46 kDa



Immunofluorescent analysis of HepG2 cells using PACO28686 at dilution of 1:100 and Alexa Fluor 488-conjugated AffiniPure Goat Anti-Rabbit IgG(H+L).



Immunohistochemistry of paraffin-embedded human prostate cancer using PACO28686 at dilution of 1:100.