

PACO28682

---

## Product Information

**Size:**

50ug

**Reactivity:**

Human

**Source:**

Rabbit

**Isotype:**

IgG

**Applications:**

ELISA, IHC, IF

**Recommended dilutions:**

ELISA:1:2000-1:10000, IHC:1:20-1:200,  
IF:1:50-1:200

**Protein Background:**

May function as a tissue-specific nuclear mRNA export factor.

**Gene ID:**

NXF3

**Uniprot**

Q9H4D5

**Synonyms:**

Nuclear RNA export factor 3 (TAP-like protein 3) (TAPL-3), NXF3, TAPL3

**Immunogen:**

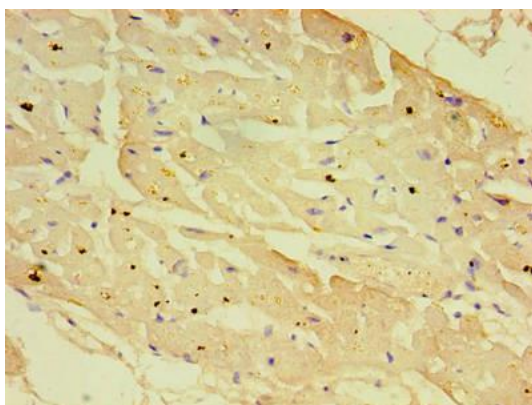
Recombinant Human Nuclear RNA export factor 3 protein (1-531AA).

**Storage:**

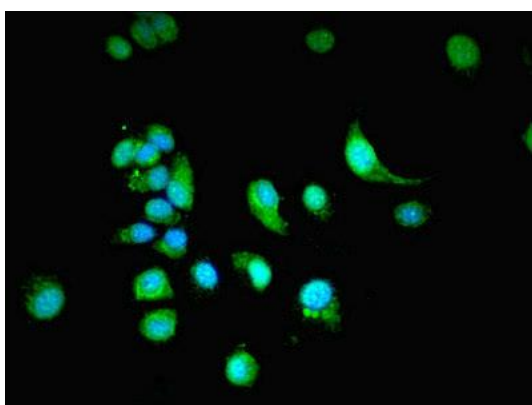
Preservative: 0.03% Proclin 300. Constituents: 50% Glycerol, 0.01M PBS, PH 7.4

## Product Images

---



Immunohistochemistry of paraffin-embedded human heart tissue using PACO28682 at dilution of 1:100.



Immunofluorescent analysis of MCF-7 cells using PACO28682 at dilution of 1:100 and Alexa Fluor 488-conjugated AffiniPure Goat Anti-Rabbit IgG(H+L).