

# XRCC6 Antibody



PACO28666

---

## Product Information

**Size:**

50ug

**Reactivity:**

Human

**Source:**

Rabbit

**Isotype:**

IgG

**Applications:**

ELISA, WB, IHC, IF

**Recommended dilutions:**

ELISA:1:2000-1:10000, WB:1:500-1:5000,  
IHC:1:20-1:200, IF:1:50-1:200

**Protein Background:****Gene ID:**

XRCC6

**Uniprot**

P12956

**Synonyms:**

X-ray repair cross-complementing protein 6 (EC 3.6.4. -) (EC 4.2.99. -) (5'-deoxyribose-5-phosphate lyase Ku70) (5'-dRP lyase Ku70) (70 kDa subunit of Ku antigen) (ATP-dependent DNA helicase 2 subunit 1) (ATP-dependent DNA helicase II 70 kDa subunit) (CTC box-binding factor 75 kDa subunit)

**Immunogen:**

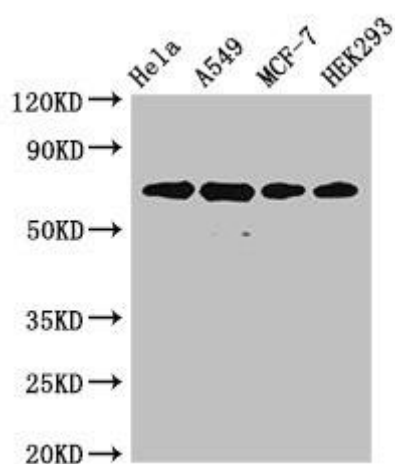
Recombinant Human X-ray repair cross-complementing protein 6 ptotein (2-609AA).

**Storage:**

Preservative: 0.03% Proclin 300. Constituents: 50% Glycerol, 0.01M PBS, PH 7.4

## Product Images

---



### Western Blot

Positive WB detected in: HeLa whole cell lysate, A549 whole cell lysate, MCF-7 whole cell lysate, HEK293 whole cell lysate

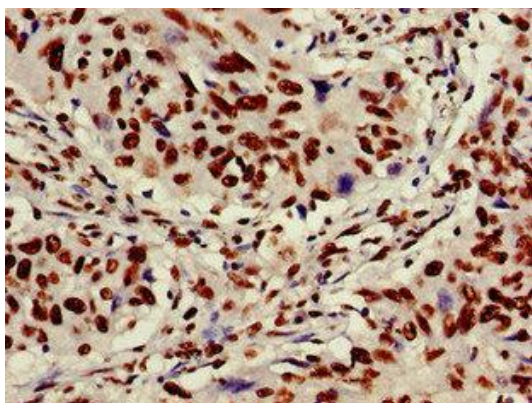
All lanes: XRCC6 antibody at 4 $\mu$ g/ml

Secondary

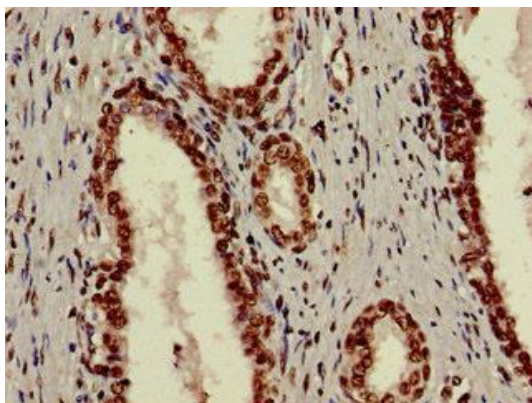
Goat polyclonal to rabbit IgG at 1/50000 dilution

Predicted band size: 70, 66 kDa

Observed band size: 70 kDa



Immunohistochemistry of paraffin-embedded human lung cancer using PACO28666 at dilution of 1:100.



Immunohistochemistry of paraffin-embedded human prostate cancer using PACO28666 at dilution of 1:100.