

NPHP1 Antibody



PACO28614

Product Information

Size:

50ug

Reactivity:

Human

Source:

Rabbit

Isotype:

IgG

Applications:

ELISA, IHC, IF

Recommended dilutions:

ELISA:1:2000-1:10000, IHC:1:20-1:200,
IF:1:50-1:200

Protein Background:

Together with BCAR1 it may play a role in the control of epithelial cell polarity. Involved in the organization of apical junctions in kidney cells together with NPHP4 and RPGRIP1L/NPHP8.

Gene ID:

NPHP1

Uniprot

O15259

Synonyms:

Nephrocystin-1 (Juvenile nephronophthisis 1 protein), NPHP1, NPH1

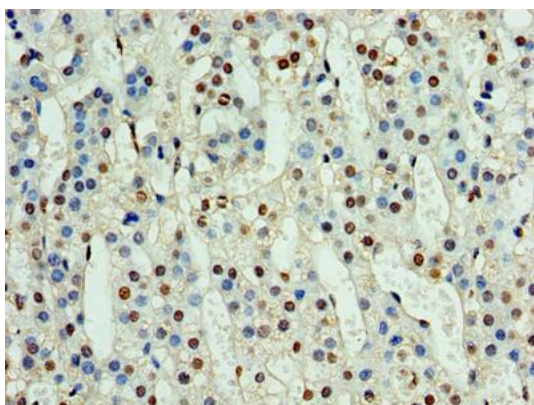
Immunogen:

Recombinant Human Nephrocystin-1 protein (1-109AA).

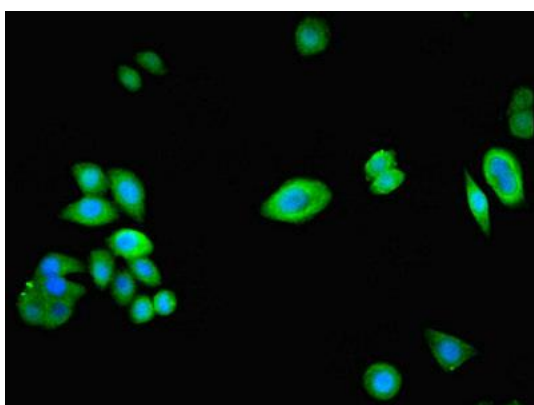
Storage:

Preservative: 0.03% Proclin 300. Constituents: 50% Glycerol, 0.01M PBS, PH 7.4

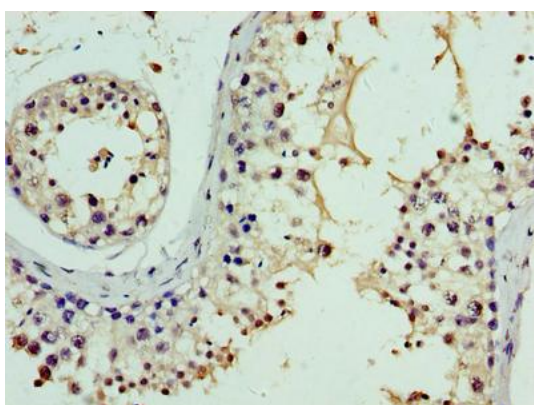
Product Images



Immunohistochemistry of paraffin-embedded human adrenal gland tissue using PACO28614 at dilution of 1:100.



Immunofluorescent analysis of PC-3 cells using PACO28614 at dilution of 1:100 and Alexa Fluor 488-conjugated AffiniPure Goat Anti-Rabbit IgG(H+L).



Immunohistochemistry of paraffin-embedded human testis tissue using PACO28614 at dilution of 1:100.