

NPBWR2 Antibody



PACO28606

Product Information

Size:

50ug

Reactivity:

Human

Source:

Rabbit

Isotype:

IgG

Applications:

ELISA, IF

Recommended dilutions:

ELISA:1:2000-1:10000, IF:1:50-1:200

Protein Background:

Interacts specifically with a number of opioid ligands. Receptor for neuropeptides B and W, which may be involved in neuroendocrine system regulation, food intake and the organization of other signals.

Gene ID:

NPBWR2

Uniprot

P48146

Synonyms:

Neuropeptides B/W receptor type 2 (G-protein coupled receptor 8), NPBWR2, GPR8

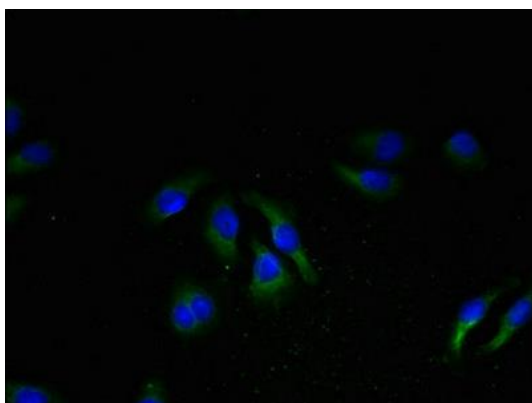
Immunogen:

Recombinant Human Neuropeptides B/W receptor type 2 protein (1-45AA).

Storage:

Preservative: 0.03% Proclin 300. Constituents: 50% Glycerol, 0.01M PBS, PH 7.4

Product Images



Immunofluorescent analysis of A549 cells using PACO28606 at dilution of 1:100 and Alexa Fluor 488-conjugated AffiniPure Goat Anti-Rabbit IgG(H+L).