

# Nid1 Antibody



PACO28562

---

## Product Information

**Size:**

50ug

**Reactivity:**

Mouse, Rat

**Source:**

Rabbit

**Isotype:**

IgG

**Applications:**

ELISA, WB

**Recommended dilutions:**

ELISA:1:2000-1:10000, WB:1:1000-1:5000

**Protein Background:**

Sulfated glycoprotein widely distributed in basement membranes and tightly associated with laminin. Also binds to collagen IV and perlecan. It probably has a role in cell-extracellular matrix interactions.

**Gene ID:**

Nid1

**Uniprot**

P10493

**Synonyms:**

Nidogen-1 (NID-1) (Entactin), Nid1, Ent

**Immunogen:**

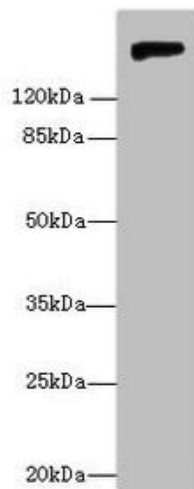
Recombinant Mouse Nidogen-1 protein (428-665AA).

**Storage:**

Preservative: 0.03% Proclin 300. Constituents: 50% Glycerol, 0.01M PBS, PH 7.4

## Product Images

---



Western blot

All lanes: Nid1 antibody at 6 $\mu$ g/ml + Rat lung tissue

Secondary

Goat polyclonal to rabbit IgG at 1/10000 dilution

Predicted band size: 137 kDa

Observed band size: 150 kDa