

PACO28534

---

## Product Information

**Size:**

50ug

**Reactivity:**

Human, Mouse

**Source:**

Rabbit

**Isotype:**

IgG

**Applications:**

ELISA, WB, IHC, IP

**Recommended dilutions:**

ELISA:1:2000-1:10000, WB:1:500-1:5000,  
IHC:1:20-1:200, IP:1:200-1:2000

**Protein Background:**

Accessory subunit of the mitochondrial membrane respiratory chain NADH dehydrogenase (Complex I), that is believed not to be involved in catalysis. Complex I functions in the transfer of electrons from NADH to the respiratory chain. The immediate electron acceptor for the enzyme is believed to be ubiquinone.

**Gene ID:**

NDUFB6

**Uniprot**

O95139

**Synonyms:**

NADH dehydrogenase [ubiquinone] 1 beta subcomplex subunit 6 (Complex I-B17) (CI-B17) (NADH-ubiquinone oxidoreductase B17 subunit), NDUFB6

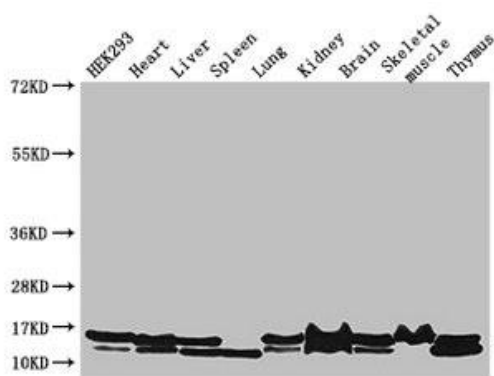
**Immunogen:**

Recombinant Human NADH dehydrogenase [ubiquinone] 1 &beta; subcomplex subunit 6 protein (2-67AA).

**Storage:**

Preservative: 0.03% Proclin 300. Constituents: 50% Glycerol, 0.01M PBS, PH 7.4

## Product Images



### Western Blot

Positive WB detected in: HEK293 whole cell lysate, Mouse heart tissue, Mouse liver tissue, Mouse spleen tissue, Mouse lung tissue, Mouse kidney tissue, Mouse brain tissue, Mouse skeletal muscle tissue, Mouse thymus tissue

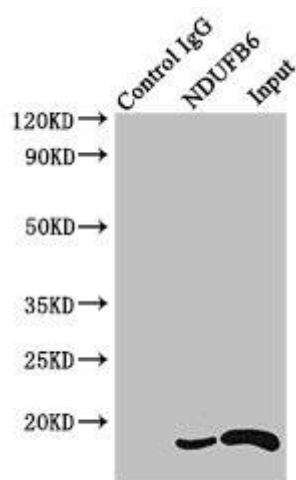
All lanes: NDUF6 antibody at 3 $\mu$ g/ml

Secondary

Goat polyclonal to rabbit IgG at 1/50000 dilution

Predicted band size: 16, 14 kDa

Observed band size: 16, 14 kDa

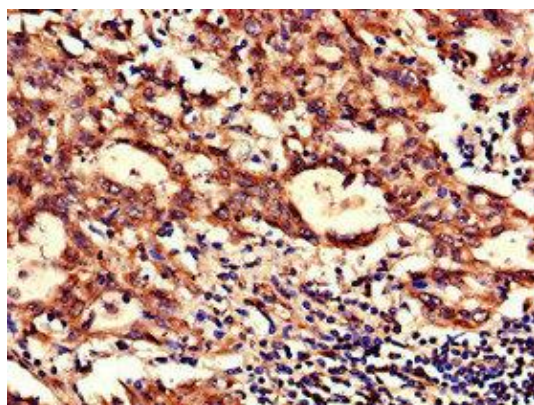


### Immunoprecipitating NDUF6 in HEK293 whole cell lysate

Lane 1: Rabbit control IgG instead of (1 $\mu$ g) instead of PACO28534 in HEK293 whole cell lysate. For western blotting, a HRP-conjugated Protein G antibody was used as the secondary antibody (1/2000)

Lane 2: PACO28534 (4 $\mu$ g) + HEK293 whole cell lysate (500 $\mu$ g)

Lane 3: HEK293 whole cell lysate (20 $\mu$ g)



Immunohistochemistry of paraffin-embedded human lung cancer using PACO28534 at dilution of 1:100.