

MRPS36 Antibody



PACO28382

Product Information

Size:

50ug

Reactivity:

Human

Source:

Rabbit

Isotype:

IgG

Applications:

ELISA, IHC

Recommended dilutions:

ELISA:1:2000-1:10000, IHC:1:20-1:200

Protein Background:

mitochondrial inner membrane, mitochondrial oxoglutarate dehydrogenase complex, mitochondrial small ribosomal subunit, mitochondrion, structural constituent of ribosome, 2-oxoglutarate metabolic process, mitochondrial translation, mitochondrial translational elongation, mitochondrial translational initiation, mitochondrial translational termination.

Gene ID:

MRPS36

Uniprot

P82909

Synonyms:

28S ribosomal protein S36, mitochondrial (MRP-S36) (S36mt), MRPS36

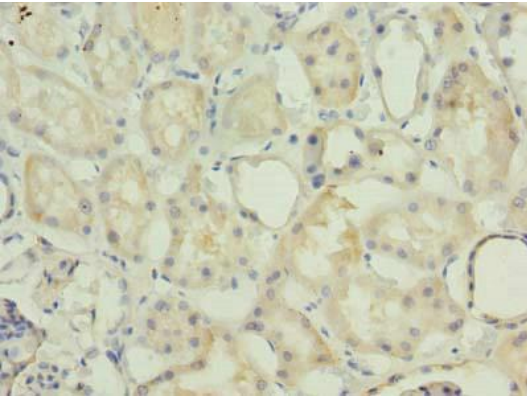
Immunogen:

Recombinant Human 28S ribosomal protein S36, mitochondrial protein (1-103AA).

Storage:

Preservative: 0.03% Proclin 300. Constituents: 50% Glycerol, 0.01M PBS, PH 7.4

Product Images



Immunohistochemistry of paraffin-embedded human kidney tissue using PACO28382 at dilution of 1:100.