

# MRPL54 Antibody



PACO28362

---

## Product Information

**Size:**

50ug

**Reactivity:**

Human

**Source:**

Rabbit

**Isotype:**

IgG

**Applications:**

ELISA, IHC

**Recommended dilutions:**

ELISA:1:2000-1:10000, IHC:1:20-1:200

**Protein Background:**

**Gene ID:**

MRPL54

**Uniprot**

Q6P161

**Synonyms:**

39S ribosomal protein L54, mitochondrial (L54mt) (MRP-L54) (Mitochondrial large ribosomal subunit protein mL54), MRPL54

**Immunogen:**

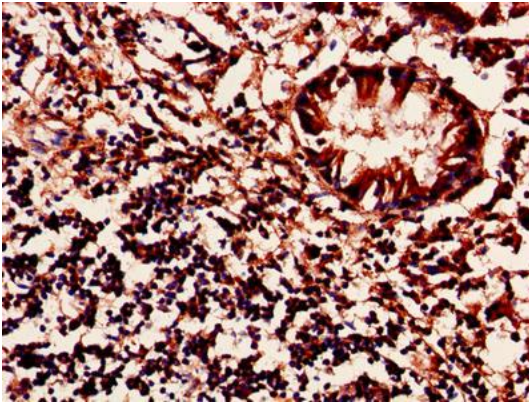
Recombinant Human 39S ribosomal protein L54, mitochondrial protein (15-138AA).

**Storage:**

Preservative: 0.03% Proclin 300. Constituents: 50% Glycerol, 0.01M PBS, PH 7.4

## Product Images

---



Immunohistochemistry of paraffin-embedded human appendix tissue using PACO28362 at dilution of 1:100.