

PFDN1 Antibody



PACO28358

Product Information

Size:

50ug

Reactivity:

Human

Source:

Rabbit

Isotype:

IgG

Applications:

ELISA, IHC, IF

Recommended dilutions:

ELISA:1:2000-1:10000, IHC:1:20-1:200,
IF:1:50-1:200

Protein Background:

PFDN1 is a heterohexameric chaperone protein which assists in the correct folding of other proteins. It binds specifically to cytosolic chaperonin and transfers target proteins. PFDN1 may function by selectively targeting nascent actin and tubulin chains pending their transfer to cytosolic chaperonin for final folding and/or assembly. It promotes folding in an environment in which there are many competing pathways for non native proteins.

Gene ID:

PFDN1

Uniprot

O60925

Synonyms:

Prefoldin subunit 1, PFDN1, PFD1

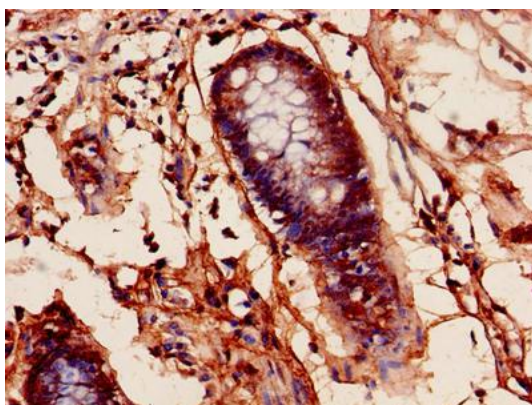
Immunogen:

Recombinant Human Prefoldin subunit 1 protein (2-122AA).

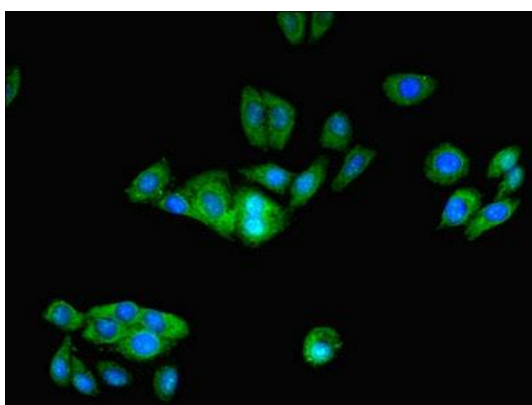
Storage:

Preservative: 0.03% Proclin 300. Constituents: 50% Glycerol, 0.01M PBS, PH 7.4

Product Images



Immunohistochemistry of paraffin-embedded human colon cancer using PACO28358 at dilution of 1:100.



Immunofluorescent analysis of HepG2 cells using PACO28358 at dilution of 1:100 and Alexa Fluor 488-conjugated AffiniPure Goat Anti-Rabbit IgG(H+L).