

MRPL3 Antibody



PACO28346

Product Information

Size:

50ug

Reactivity:

Human

Source:

Rabbit

Isotype:

IgG

Applications:

ELISA, WB, IHC

Recommended dilutions:

ELISA:1:2000-1:10000, WB:1:500-1:2000,
IHC:1:20-1:200

Protein Background:

mitochondrial inner membrane, mitochondrial large ribosomal subunit, poly(A) RNA binding, RNA binding, mitochondrial translation, mitochondrial translational elongation, mitochondrial translational initiation, mitochondrial translational termination, organelle organization, translation.

Gene ID:

MRPL3

Uniprot

P09001

Synonyms:

39S ribosomal protein L3, mitochondrial (L3mt) (MRP-L3) (Mitochondrial large ribosomal subunit protein uL3m), MRPL3, MRL3 RPML3

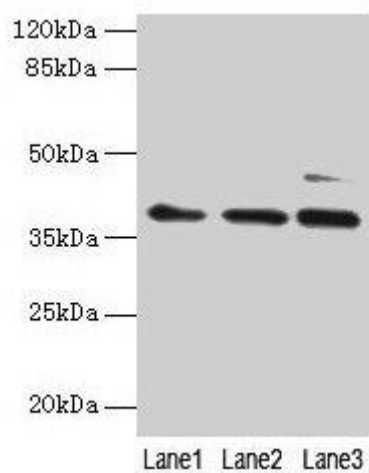
Immunogen:

Recombinant Human 39S ribosomal protein L3, mitochondrial protein (201-348AA).

Storage:

Preservative: 0.03% Proclin 300. Constituents: 50% Glycerol, 0.01M PBS, PH 7.4

Product Images



Western blot

All lanes: MRPL3 antibody at 6 μ g/ml

Lane 1: Hela whole cell lysate

Lane 2: HepG2 whole cell lysate

Lane 3: A549 whole cell lysate

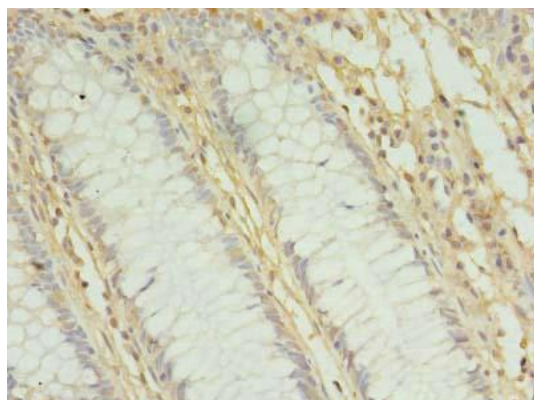
Secondary

Goat polyclonal to rabbit IgG at 1/10000 dilution

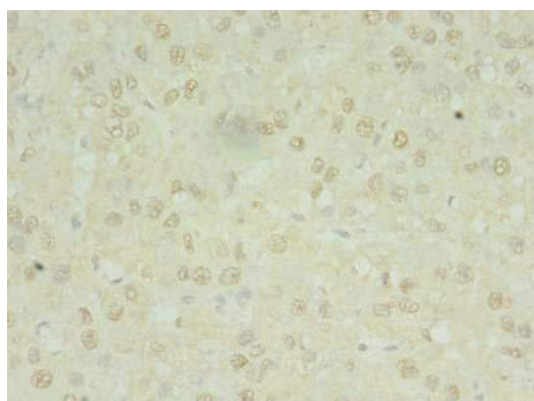
Predicted band size: 39 kDa

Observed band size: 39 kDa

.



Immunohistochemistry of paraffin-embedded human colon cancer using PACO28346 at dilution of 1:100.



Immunohistochemistry of paraffin-embedded human liver cancer using PACO28346 at dilution of 1:100.