

MRPL19 Antibody



PACO28342

Product Information

Size:

50ug

Reactivity:

Human, Mouse

Source:

Rabbit

Isotype:

IgG

Applications:

ELISA, WB, IHC, IF

Recommended dilutions:

ELISA:1:2000-1:10000, WB:1:500-1:5000,
IHC:1:20-1:200, IF:1:50-1:200

Protein Background:**Gene ID:**

MRPL19

Uniprot

P49406

Synonyms:

39S ribosomal protein L19, mitochondrial (L19mt) (MRP-L19) (39S ribosomal protein L15, mitochondrial) (L15mt) (MRP-L15) (Mitochondrial large ribosomal subunit protein bL19m), MRPL19, KIAA0104 MRPL15

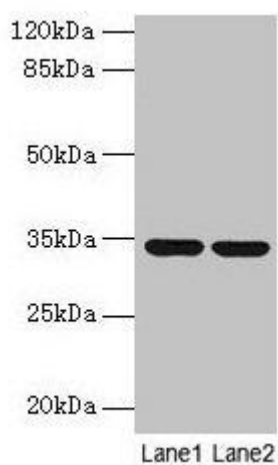
Immunogen:

Recombinant Human 39S ribosomal protein L19, mitochondrial protein (1-292AA).

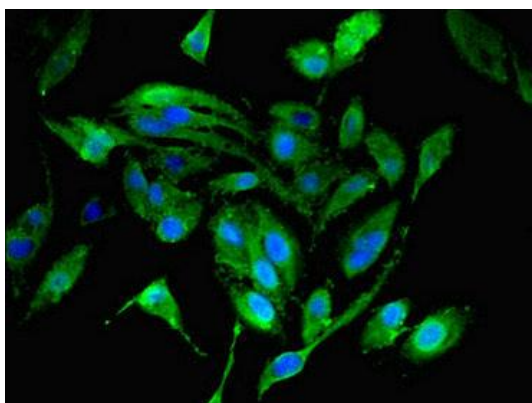
Storage:

Preservative: 0.03% Proclin 300. Constituents: 50% Glycerol, 0.01M PBS, PH 7.4

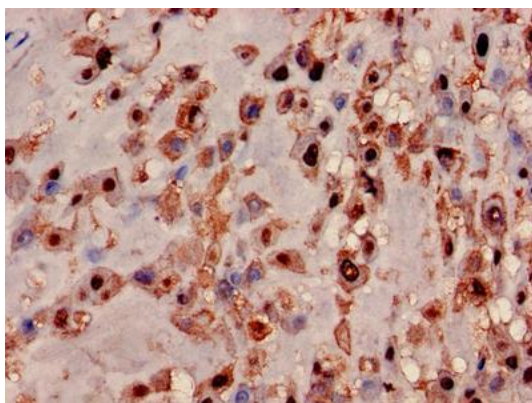
Product Images



Western blot
All lanes: MRPL19 antibody at 2 μ g/ml
Lane 1: MCF-7 whole cell lysate
Lane 2: Mouse liver tissue
Secondary
Goat polyclonal to rabbit IgG at 1/10000 dilution
Predicted band size: 34 kDa
Observed band size: 34 kDa



Immunofluorescent analysis of HeLa cells using PACO28342 at dilution of 1:100 and Alexa Fluor 488-conjugated AffiniPure Goat Anti-Rabbit IgG(H+L).



Immunohistochemistry of paraffin-embedded human placenta tissue using PACO28342 at dilution of 1:100.