

# MRPL14 Antibody



PACO28338

---

## Product Information

**Size:**

50ug

**Reactivity:**

Human, Mouse

**Source:**

Rabbit

**Isotype:**

IgG

**Applications:**

ELISA, WB, IHC

**Recommended dilutions:**

ELISA:1:2000-1:10000, WB:1:1000-1:5000,  
IHC:1:20-1:200

**Protein Background:**

Forms part of 2 intersubunit bridges in the assembled ribosome. Upon binding to MALSU1 intersubunit bridge formation is blocked, preventing ribosome formation and repressing translation (Probable).

**Gene ID:**

MRPL14

**Uniprot**

Q6P1L8

**Synonyms:**

39S ribosomal protein L14, mitochondrial (L14mt) (MRP-L14) (39S ribosomal protein L32, mitochondrial) (L32mt) (MRP-L32) (Mitochondrial large ribosomal subunit protein uL14m), MRPL14, MRPL32 RPML32

**Immunogen:**

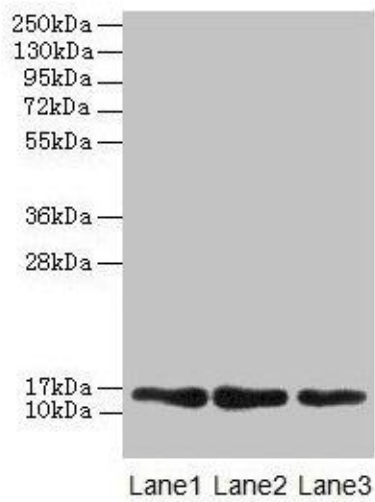
Recombinant Human 39S ribosomal protein L14, mitochondrial protein (1-145AA).

**Storage:**

Preservative: 0.03% Proclin 300. Constituents: 50% Glycerol, 0.01M PBS, PH 7.4

## Product Images

---



### Western blot

All lanes: MRPL14 antibody at 2 $\mu$ g/ml

Lane 1: Hela whole cell lysate

Lane 2: HepG2 whole cell lysate

Lane 3: Mouse liver tissue

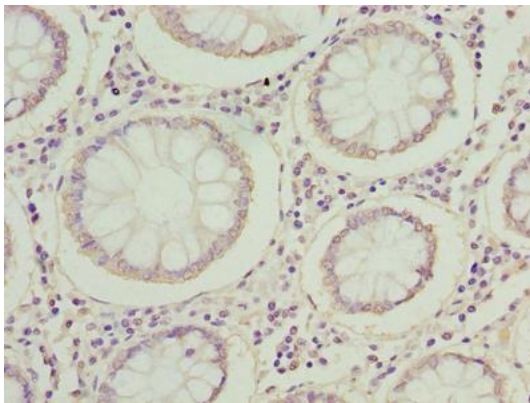
Secondary

Goat polyclonal to rabbit IgG at 1/10000 dilution

Predicted band size: 16 kDa

Observed band size: 16 kDa

.



Immunohistochemistry of paraffin-embedded human colon cancer using PACO28338 at dilution of 1:100.