

MRFAP1L1 Antibody



PACO28334

Product Information

Size:

50ug

Reactivity:

Human

Source:

Rabbit

Isotype:

IgG

Applications:

ELISA, WB

Recommended dilutions:

ELISA:1:2000-1:10000, WB:1:1000-1:5000

Protein Background:

Gene ID:

MRFAP1L1

Uniprot

Q96HT8

Synonyms:

MORF4 family-associated protein 1-like 1, MRFAP1L1

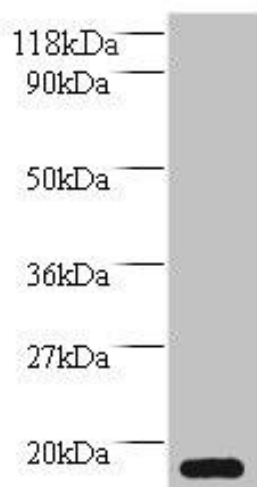
Immunogen:

Recombinant Human MORF4 family-associated protein 1-like 1 protein (1-127AA).

Storage:

Preservative: 0.03% Proclin 300. Constituents: 50% Glycerol, 0.01M PBS, PH 7.4

Product Images



Western blot

All lanes: MRFAP1L1 antibody at 2 μ g/ml + HepG2 whole cell lysate

Secondary

Goat polyclonal to rabbit IgG at 1/10000 dilution

Predicted band size: 15 kDa

Observed band size: 15 kDa