

PACO28330

---

## Product Information

**Size:**

50ug

**Reactivity:**

Human, Mouse

**Source:**

Rabbit

**Isotype:**

IgG

**Applications:**

ELISA, WB

**Recommended dilutions:**

ELISA:1:2000-1:10000, WB:1:1000-1:5000

**Protein Background:**

Plays a role in the incorporation of pigments into hair. May function in membrane fusion and regulate the biogenesis of disk membranes of photoreceptor rod cells.

**Gene ID:**

MREG

**Uniprot**

Q8N565

**Synonyms:**

Melanoregulin (Dilute suppressor protein homolog), MREG, DSU

**Immunogen:**

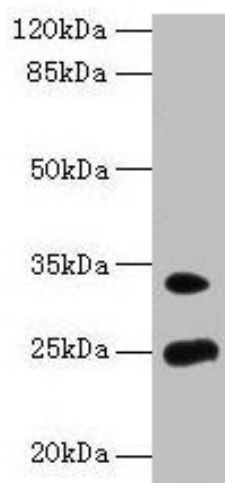
Recombinant Human Melanoregulin protein (1-214AA).

**Storage:**

Preservative: 0.03% Proclin 300. Constituents: 50% Glycerol, 0.01M PBS, PH 7.4

## Product Images

---



### Western blot

All lanes: MREG antibody at 8 $\mu$ g/ml + Mouse stomach tissue

Secondary

Goat polyclonal to rabbit IgG at 1/10000 dilution

Predicted band size: 25, 27 kDa

Observed band size: 25, 33 kDa

.