

# MPV17 Antibody



PACO28318

---

## Product Information

**Size:**

50ug

**Reactivity:**

Human, Mouse

**Source:**

Rabbit

**Isotype:**

IgG

**Applications:**

ELISA, WB, IF

**Recommended dilutions:**

ELISA:1:2000-1:10000, WB:1:1000-1:5000,  
IF:1:50-1:200

**Protein Background:**

Involved in mitochondria homeostasis. May be involved in the metabolism of reactive oxygen species and control of oxidative phosphorylation and mitochondrial DNA (mtDNA) maintenance.

**Gene ID:**

MPV17

**Uniprot**

P39210

**Synonyms:**

Protein Mpv17, MPV17

**Immunogen:**

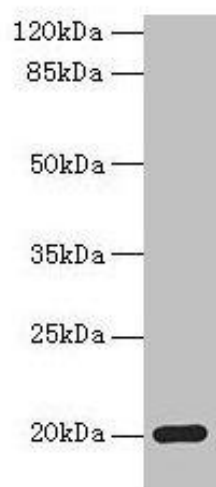
Recombinant Human Protein Mpv17 protein (1-176AA).

**Storage:**

Preservative: 0.03% Proclin 300. Constituents: 50% Glycerol, 0.01M PBS, PH 7.4

## Product Images

---



### Western blot

All lanes: MPV17 antibody at 2 $\mu$ g/ml + Mouse heart tissue

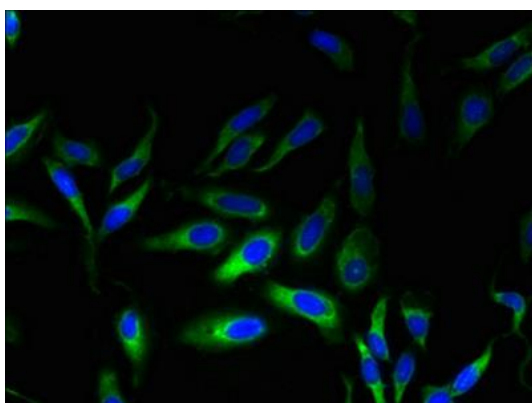
Secondary

Goat polyclonal to rabbit IgG at 1/10000 dilution

Predicted band size: 20 kDa

Observed band size: 20 kDa

.



Immunofluorescent analysis of HeLa cells using PACO28318 at dilution of 1:100 and Alexa Fluor 488-conjugated AffiniPure Goat Anti-Rabbit IgG(H+L).