

PACO28310

Product Information

Size:

50ug

Reactivity:

Escherichia coli

Source:

Rabbit

Isotype:

IgG

Applications:

ELISA, WB

Recommended dilutions:

ELISA:1:2000-1:10000, WB:1:1000-1:5000

Protein Background:

Involved in the conversion of glucose to GDP-L-fucose, which can be converted to L-fucose, a capsular polysaccharide.

Gene ID:

manA

Uniprot

P00946

Synonyms:

Mannose-6-phosphate isomerase (EC 5.3.1.8) (Phosphohexomutase) (Phosphomannose isomerase) (PMI), manA, pmi

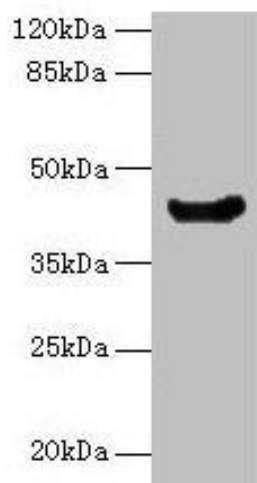
Immunogen:

Recombinant Escherichia coli Mannose-6-phosphate isomerase protein (1-391AA).

Storage:

Preservative: 0.03% Proclin 300. Constituents: 50% Glycerol, 0.01M PBS, PH 7.4

Product Images



Western blot

All lanes: manA antibody at 16 μ g/ml + DH5alpha whole cell lysate

Secondary

Goat polyclonal to rabbit IgG at 1/10000 dilution

Predicted band size: 43 kDa

Observed band size: 43 kDa