

Product Information

Size:

50ug

Reactivity:

Human

Source:

Rabbit

Isotype:

IgG

Applications:

ELISA, WB

Recommended dilutions:

ELISA:1:2000-1:10000, WB:1:1000-1:5000

Protein Background:

Catalytic subunit of the molybdopterin synthase complex, a complex that catalyzes the conversion of precursor Z into molybdopterin. Acts by mediating the incorporation of 2 sulfur atoms from thiocarboxylated MOCS2A into precursor Z to generate a dithiolene group.

Gene ID:

MOCS2

Uniprot

O96007

Synonyms:

Molybdopterin synthase catalytic subunit (EC 2.8.1.12) (MOCO1-B) (Molybdenum cofactor synthesis protein 2 large subunit) (Molybdenum cofactor synthesis protein 2B) (MOCS2B) (Molybdopterin-synthase large subunit) (MPT synthase large subunit), MOCS2, MCBPE MOCO1

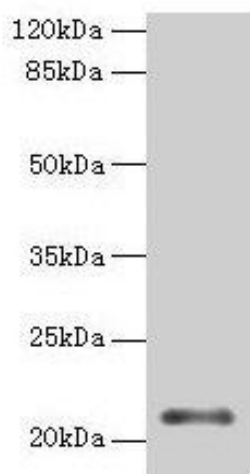
Immunogen:

Recombinant Human Molybdopterin synthase catalytic subunit protein (1-188AA).

Storage:

Preservative: 0.03% Proclin 300. Constituents: 50% Glycerol, 0.01M PBS, PH 7.4

Product Images



Western blot

All lanes: MOCS2 antibody at 2 μ g/ml + Jurkat whole cell lysate

Secondary

Goat polyclonal to rabbit IgG at 1/10000 dilution

Predicted band size: 21 kDa

Observed band size: 21 kDa

.