

PACO28194

---

## Product Information

**Size:**

50ug

**Reactivity:**

Human, Mouse, Rat

**Source:**

Rabbit

**Isotype:**

IgG

**Applications:**

ELISA, WB, IHC

**Recommended dilutions:**

ELISA:1:2000-1:10000, WB:1:1000-1:5000,  
IHC:1:20-1:200

**Protein Background:**

Serves as a reserve supply of oxygen and facilitates the movement of oxygen within muscles.

**Gene ID:**

MB

**Uniprot**

P02144

**Synonyms:**

Myoglobin, MB

**Immunogen:**

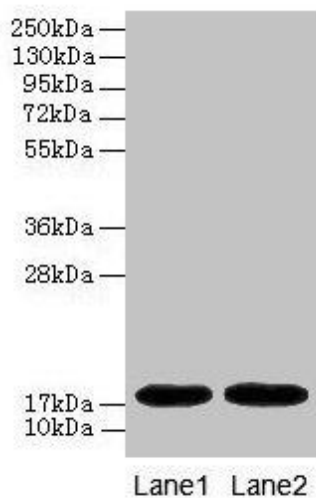
Recombinant Human Myoglobin protein (2-154AA).

**Storage:**

Preservative: 0.03% Proclin 300. Constituents: 50% Glycerol, 0.01M PBS, PH 7.4

## Product Images

---



### Western blot

All lanes: MB antibody at 2 $\mu$ g/ml

Lane 1: Rat heart tissue

Lane 2: Mouse heart tissue

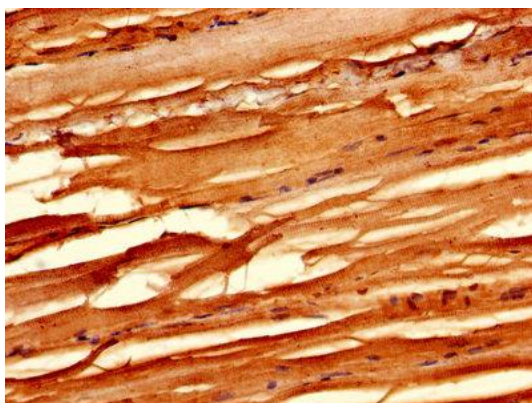
Secondary

Goat polyclonal to rabbit IgG at 1/10000 dilution

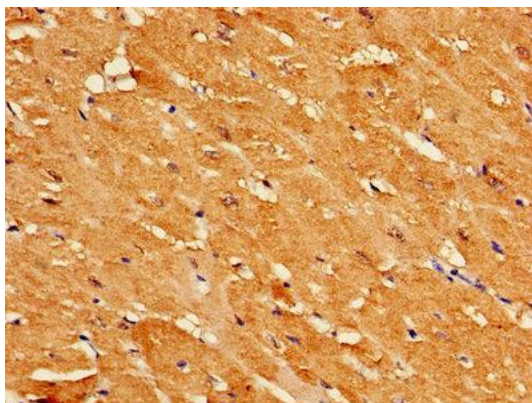
Predicted band size: 18 kDa

Observed band size: 18 kDa

.



Immunohistochemistry of paraffin-embedded human skeletal muscle tissue using PACO28194 at dilution of 1:100.



Immunohistochemistry of paraffin-embedded human heart tissue using PACO28194 at dilution of 1:100.