

# MAGEA8 Antibody



PACO28114

---

## Product Information

**Size:**

50ug

**Reactivity:**

Human

**Source:**

Rabbit

**Isotype:**

IgG

**Applications:**

ELISA, IHC, IF

**Recommended dilutions:**

ELISA:1:2000-1:10000, IHC:1:20-1:200,  
IF:1:50-1:200

**Protein Background:**

Not known, though may play a role in embryonal development and tumor transformation or aspects of tumor progression.

**Gene ID:**

MAGEA8

**Uniprot**

P43361

**Synonyms:**

Melanoma-associated antigen 8 (Cancer/testis antigen 1.8) (CT1.8) (MAGE-8 antigen),  
MAGEA8, MAGE8

**Immunogen:**

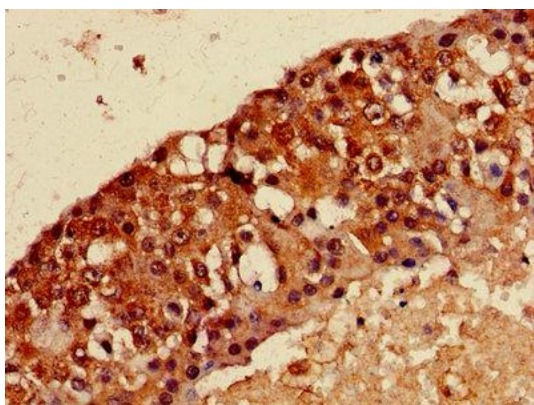
Recombinant Human Melanoma-associated antigen 8 protein (1-270AA).

**Storage:**

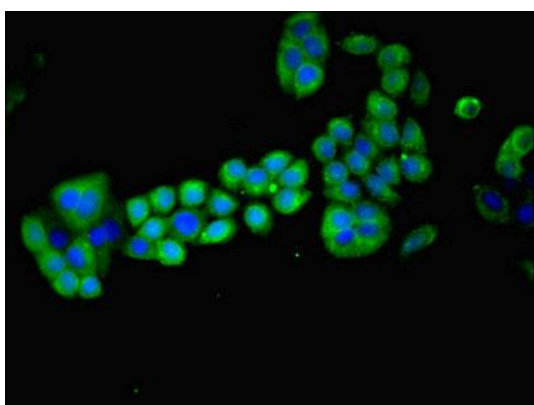
Preservative: 0.03% Proclin 300. Constituents: 50% Glycerol, 0.01M PBS, PH 7.4

## Product Images

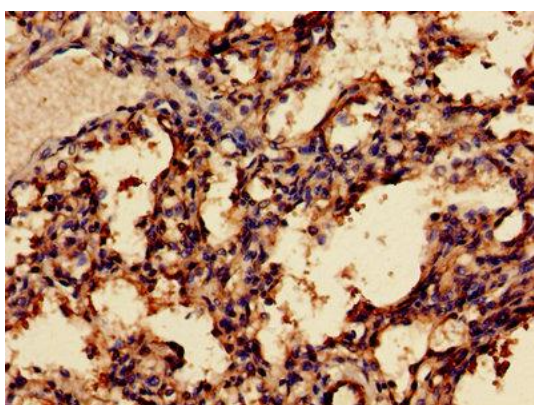
---



Immunohistochemistry of paraffin-embedded human breast cancer using PACO28114 at dilution of 1:100.



Immunofluorescent analysis of PC-3 cells using PACO28114 at dilution of 1:100 and Alexa Fluor 488-conjugated AffiniPure Goat Anti-Rabbit IgG(H+L).



Immunohistochemistry of paraffin-embedded human lung tissue using PACO28114 at dilution of 1:100.