

# MAGEA5 Antibody



PACO28110

---

## Product Information

**Size:**

50ug

**Reactivity:**

Human

**Source:**

Rabbit

**Isotype:**

IgG

**Applications:**

ELISA, IHC

**Recommended dilutions:**

ELISA:1:2000-1:10000, IHC:1:20-1:200

**Protein Background:**

Not known, though may play a role tumor transformation or progression. In vitro promotes cell viability in melanoma cell lines.

**Gene ID:**

MAGEA5

**Uniprot**

P43359

**Synonyms:**

Melanoma-associated antigen 5 (Cancer/testis antigen 1.5) (CT1.5) (MAGE-5 antigen), MAGEA5, MAGE5

**Immunogen:**

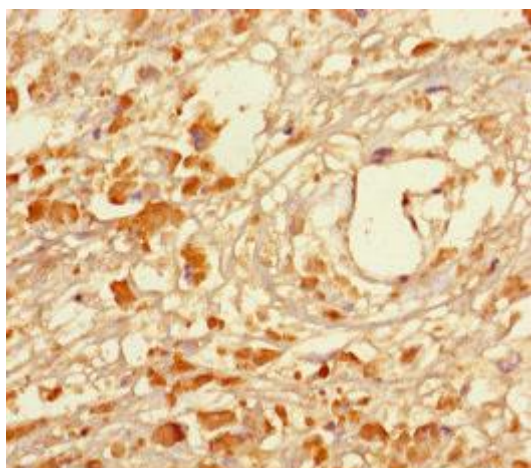
Recombinant Human Melanoma-associated antigen 5 protein (1-124AA).

**Storage:**

Preservative: 0.03% Proclin 300. Constituents: 50% Glycerol, 0.01M PBS, PH 7.4

## Product Images

---



Immunohistochemistry of paraffin-embedded human melanoma using PACO28110 at dilution of 1:100.