

# MAGEA4 Antibody



PACO28106

---

## Product Information

**Size:**

50ug

**Reactivity:**

Human

**Source:**

Rabbit

**Isotype:**

IgG

**Applications:**

ELISA, IHC

**Recommended dilutions:**

ELISA:1:2000-1:10000, IHC:1:20-1:200

**Protein Background:**

Not known, though may play a role in embryonal development and tumor transformation or aspects of tumor progression.

**Gene ID:**

MAGEA4

**Uniprot**

P43358

**Synonyms:**

Melanoma-associated antigen 4 (Cancer/testis antigen 1.4) (CT1.4) (MAGE-4 antigen) (MAGE-41 antigen) (MAGE-X2 antigen), MAGEA4, MAGE4

**Immunogen:**

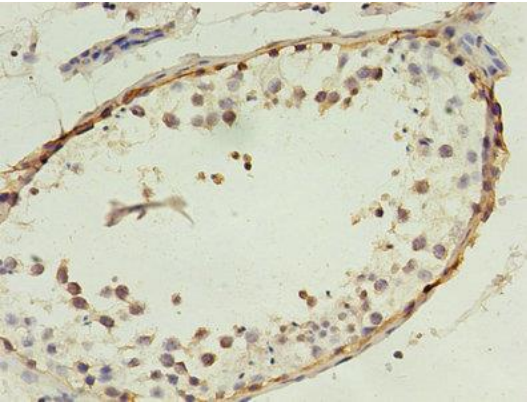
Recombinant Human Melanoma-associated antigen 4 protein (1-270AA).

**Storage:**

Preservative: 0.03% Proclin 300. Constituents: 50% Glycerol, 0.01M PBS, PH 7.4

## Product Images

---



Immunohistochemistry of paraffin-embedded human testis tissue using PACO28106 at dilution of 1:100.