

MAGEA10 Antibody



PACO28102

Product Information

Size:

50ug

Reactivity:

Human

Source:

Rabbit

Isotype:

IgG

Applications:

ELISA, WB, IHC

Recommended dilutions:

ELISA:1:2000-1:10000, WB:1:500-1:5000,
IHC:1:20-1:200

Protein Background:

Not known, though may play a role in embryonal development and tumor transformation or aspects of tumor progression.

Gene ID:

MAGEA10

Uniprot

P43363

Synonyms:

Melanoma-associated antigen 10 (Cancer/testis antigen 1.10) (CT1.10) (MAGE-10 antigen), MAGEA10, MAGE10

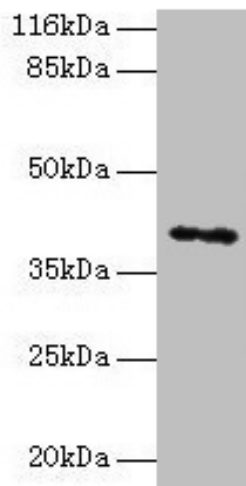
Immunogen:

Recombinant Human Melanoma-associated antigen 10 protein (2-225AA).

Storage:

Preservative: 0.03% Proclin 300. Constituents: 50% Glycerol, 0.01M PBS, PH 7.4

Product Images



Western blot

All lanes: MAGEA10 antibody at 2 μ g/ml + HL60 whole cell lysate

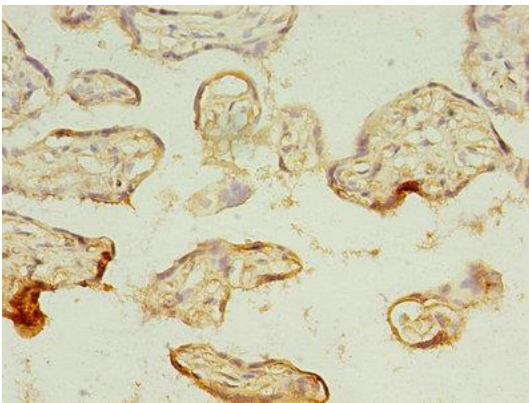
Secondary

Goat polyclonal to rabbit IgG at 1/10000 dilution

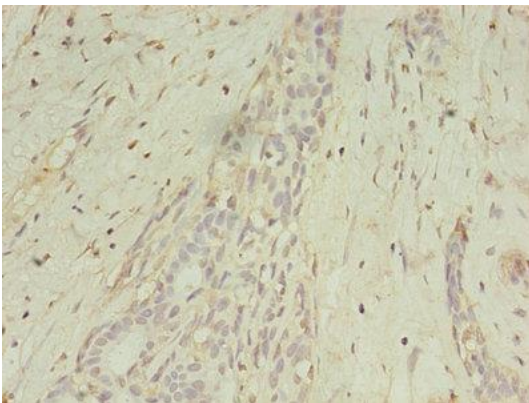
Predicted band size: 41 kDa

Observed band size: 41 kDa

.



Immunohistochemistry of paraffin-embedded human placenta tissue using PACO28102 at dilution of 1:100.



Immunohistochemistry of paraffin-embedded human breast cancer using PACO28102 at dilution of 1:100.