

LUZP2 Antibody



PACO28054

Product Information

Size:

50ug

Reactivity:

Human

Source:

Rabbit

Isotype:

IgG

Applications:

ELISA, WB, IHC, IF

Recommended dilutions:

ELISA:1:2000-1:10000, WB:1:1000-1:5000,
IHC:1:20-1:200, IF:1:50-1:200

Protein Background:

Gene ID:

LUZP2

Uniprot

Q86TE4

Synonyms:

Leucine zipper protein 2, LUZP2

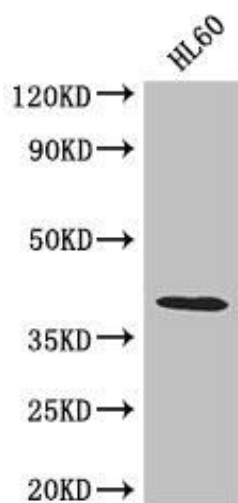
Immunogen:

Recombinant Human Leucine zipper protein 2 protein (20-346AA).

Storage:

Preservative: 0.03% Proclin 300. Constituents: 50% Glycerol, 0.01M PBS, PH 7.4

Product Images



Western Blot

Positive WB detected in: HL60 whole cell lysate

All lanes: LUZP2 antibody at 2.6µg/ml

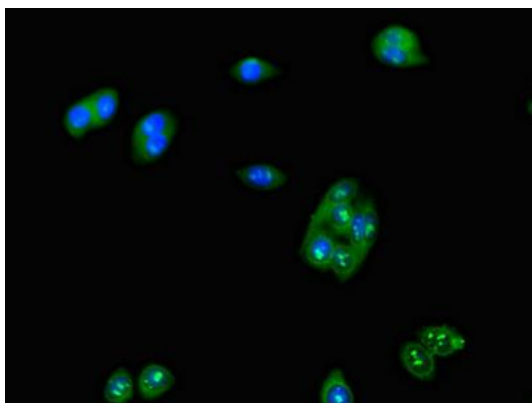
Secondary

Goat polyclonal to rabbit IgG at 1/50000 dilution

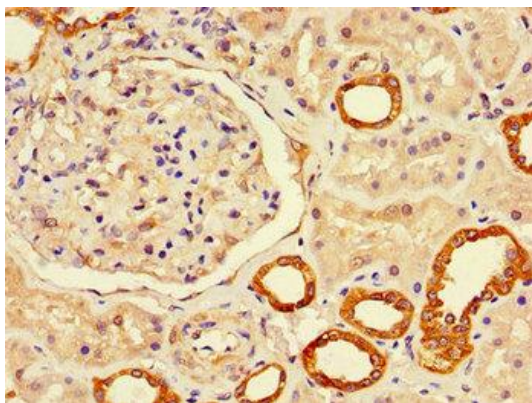
Predicted band size: 39, 19, 16, 29 kDa

Observed band size: 39 kDa

.



Immunofluorescent analysis of HepG2 cells using PACO28054 at dilution of 1:100 and Alexa Fluor 488-conjugated AffiniPure Goat Anti-Rabbit IgG(H+L).



Immunohistochemistry of paraffin-embedded human kidney tissue using PACO28054 at dilution of 1:100.