

# LSM4 Antibody



PACO28045

---

## Product Information

**Size:**

50ug

**Reactivity:**

Human

**Source:**

Rabbit

**Isotype:**

IgG

**Applications:**

ELISA, WB, IHC, IF

**Recommended dilutions:**

ELISA:1:2000-1:10000, WB:1:500-1:5000,  
IHC:1:20-1:200, IF:1:50-1:200

**Protein Background:**

Binds specifically to the 3'-terminal U-tract of U6 snRNA.

**Gene ID:**

LSM4

**Uniprot**

Q9Y4Z0

**Synonyms:**

U6 snRNA-associated Sm-like protein LSm4 (Glycine-rich protein) (GRP), LSM4

**Immunogen:**

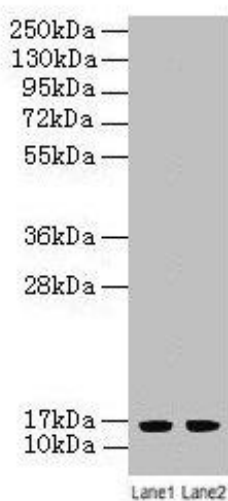
Recombinant Human U6 snRNA-associated Sm-like protein LSm4 protein (1-139AA).

**Storage:**

Preservative: 0.03% Proclin 300. Constituents: 50% Glycerol, 0.01M PBS, PH 7.4

## Product Images

---



### Western blot

All lanes: LSM4 antibody at 2 $\mu$ g/ml

Lane 1: A549 whole cell lysate

Lane 2: K562 whole cell lysate

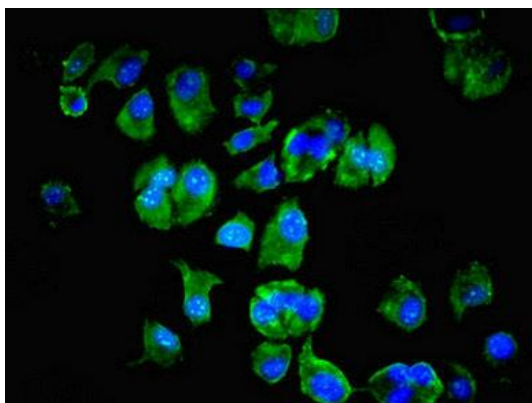
Secondary

Goat polyclonal to rabbit IgG at 1/10000 dilution

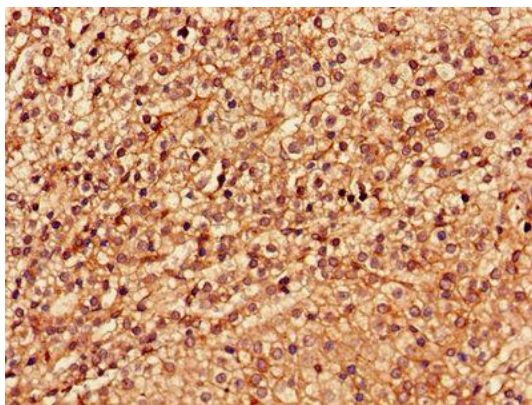
Predicted band size: 16 kDa

Observed band size: 16 kDa

.



Immunofluorescent analysis of MCF-7 cells using PACO28045 at dilution of 1:100 and Alexa Fluor 488-conjugated AffiniPure Goat Anti-Rabbit IgG(H+L).



Immunohistochemistry of paraffin-embedded human adrenal gland tissue using PACO28045 at dilution of 1:100.