

LSM1 Antibody



PACO28033

Product Information

Size:

50ug

Reactivity:

Human

Source:

Rabbit

Isotype:

IgG

Applications:

ELISA, IHC

Recommended dilutions:

ELISA:1:2000-1:10000, IHC:1:20-1:200

Protein Background:

Plays a role in replication-dependent histone mRNA degradation. Binds specifically to the 3'-terminal U-tract of U6 snRNA.

Gene ID:

LSM1

Uniprot

O15116

Synonyms:

U6 snRNA-associated Sm-like protein LSm1 (Cancer-associated Sm-like) (Small nuclear ribonuclear CaSm), LSM1, CASM

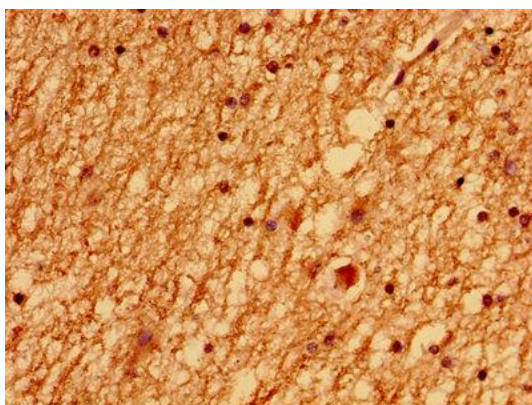
Immunogen:

Recombinant Human U6 snRNA-associated Sm-like protein LSm1 protein (1-133AA).

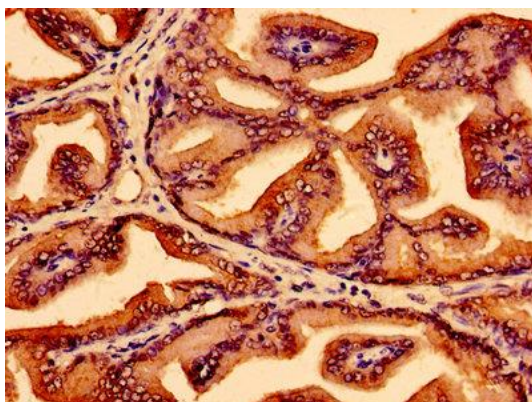
Storage:

Preservative: 0.03% Proclin 300. Constituents: 50% Glycerol, 0.01M PBS, PH 7.4

Product Images



Immunohistochemistry of paraffin-embedded human brain tissue using PACO28033 at dilution of 1:100.



Immunohistochemistry of paraffin-embedded human prostate tissue using PACO28033 at dilution of 1:100.