

PACO28013

Product Information

Size:

50ug

Reactivity:

Human

Source:

Rabbit

Isotype:

IgG

Applications:

ELISA, IHC, IF

Recommended dilutions:

ELISA:1:2000-1:10000, IHC:1:20-1:200,
IF:1:50-1:200

Protein Background:

May be involved in coupling signal transduction and vesicle trafficking to enable polarized secretion and/or membrane deposition of immune effector molecules.

Gene ID:

LRBA

Uniprot

P50851

Synonyms:

Lipopolysaccharide-responsive and beige-like anchor protein (Beige-like protein) (CDC4-like protein), LRBA, BGL CDC4L LBA

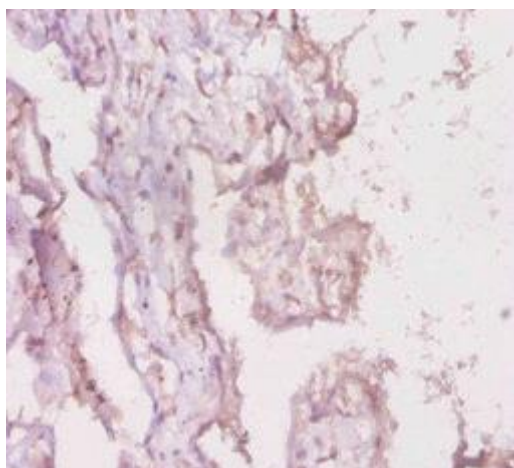
Immunogen:

Recombinant Human Lipopolysaccharide-responsive and beige-like anchor protein (2-252AA).

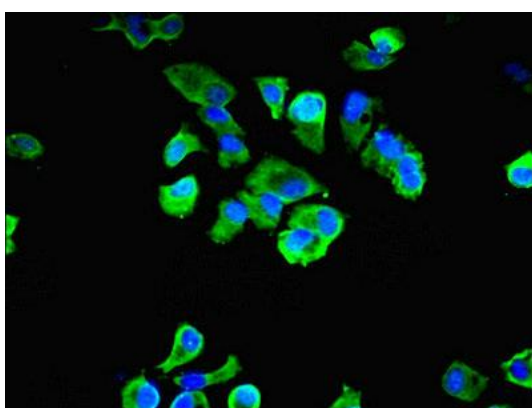
Storage:

Preservative: 0.03% Proclin 300. Constituents: 50% Glycerol, 0.01M PBS, PH 7.4

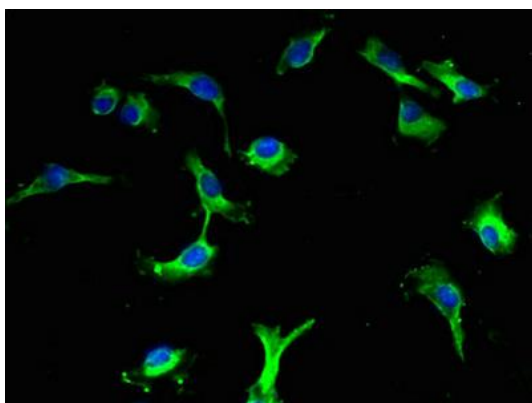
Product Images



Immunohistochemistry of paraffin-embedded human placenta tissue using PACO28013 at dilution of 1:20.



Immunofluorescent analysis of MCF-7 cells using PACO28013 at dilution of 1:100 and Alexa Fluor 488-conjugated AffiniPure Goat Anti-Rabbit IgG(H+L).



Immunofluorescent analysis of U251 cells using PACO28013 at dilution of 1:100 and Alexa Fluor 488-conjugated AffiniPure Goat Anti-Rabbit IgG(H+L).