

Product Information

Size:

50ug

Reactivity:

Human, Mouse

Source:

Rabbit

Isotype:

IgG

Applications:

ELISA, WB, IHC, IF

Recommended dilutions:

ELISA:1:2000-1:10000, WB:1:1000-1:5000,
IHC:1:200-1:500, IF:1:50-1:200

Protein Background:

Receptor for lysophosphatidic acid, (LPA), a mediator of diverse cellular activities. Transduces a signal by increasing the intracellular calcium ions and by stimulating adenylyl cyclase activity. The rank order of potency for agonists of this receptor is 1-oleoyl- > 1-stearoyl- > 1-palmitoyl- > 1-myristoyl- > 1-alkyl- > 1-alkenyl-LPA.

Gene ID:

LPAR4

Uniprot

Q99677

Synonyms:

Lysophosphatidic acid, receptor 4 (LPA receptor 4) (LPA-4) (G-protein coupled receptor 23) (P2Y purinoceptor 9) (P2Y9) (P2Y5-like receptor) (Purinergic receptor 9), LPAR4, GPR23 LPA4 P2RY9

Immunogen:

Recombinant Human Lysophosphatidic acid, receptor 4 protein (1-43AA).

Storage:

Preservative: 0.03% Proclin 300. Constituents: 50% Glycerol, 0.01M PBS, PH 7.4

Product Images



Western blot

All lanes: LPAR4 antibody at 4 μ g/ml + Mouse kidney tissue

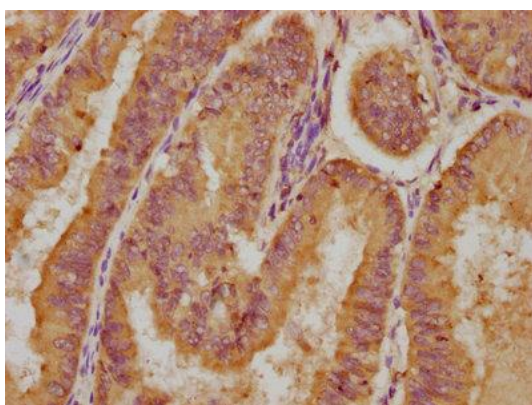
Secondary

Goat polyclonal to rabbit IgG at 1/10000 dilution

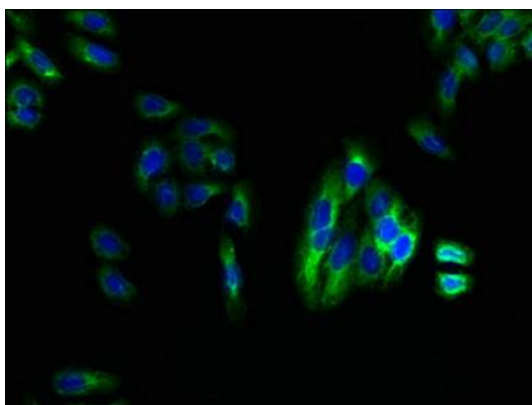
Predicted band size: 42 kDa

Observed band size: 42 kDa

.



IHC image of PACO28005 diluted at 1:200 and staining in paraffin-embedded human endometrial cancer performed on a Leica BondTM system. After dewaxing and hydration, antigen retrieval was mediated by high pressure in a citrate buffer (pH 6.0). Section was blocked with 10% normal goat serum 30min at RT. Then primary antibody (1% BSA) was incubated at 4°C overnight. The primary is detected by a biotinylated secondary antibody and visualized using an HRP conjugated SP system.



Immunofluorescent analysis of HepG2 cells using PACO28005 at dilution of 1:100 and Alexa Fluor 488-conjugated AffiniPure Goat Anti-Rabbit IgG(H+L).