

PACO27985

Product Information

Size:

50ug

Reactivity:

Rat, Human

Source:

Rabbit

Isotype:

IgG

Applications:

ELISA, WB

Recommended dilutions:

ELISA:1:2000-1:10000, WB:1:1000-1:5000

Protein Background:

Responsible for the post-translational oxidative deamination of peptidyl lysine residues in precursors to fibrous collagen and elastin.

Gene ID:

Lox

Uniprot

P16636

Synonyms:

Protein-lysine 6-oxidase (EC 1.4.3.13) (Lysyl oxidase), Lox

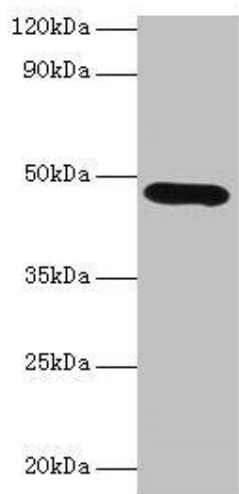
Immunogen:

Recombinant Rat Protein-lysine 6-oxidase protein (163-411AA).

Storage:

Preservative: 0.03% Proclin 300. Constituents: 50% Glycerol, 0.01M PBS, PH 7.4

Product Images



Western blot

All lanes: Lox antibody at 2 μ g/ml + K562 whole cell lysate

Secondary

Goat polyclonal to rabbit IgG at 1/10000 dilution

Predicted band size: 47 kDa

Observed band size: 47 kDa

.