

PACO27969

Product Information

Size:

50ug

Reactivity:

Human

Source:

Rabbit

Isotype:

IgG

Applications:

ELISA, IHC, IF

Recommended dilutions:

ELISA:1:2000-1:10000, IHC:1:20-1:200,
IF:1:50-1:200

Protein Background:**Gene ID:**

LIMS3

Uniprot

P0CW19

Synonyms:

LIM and senescent cell antigen-like-containing domain protein 3 (Particularly interesting new Cys-His protein 3) (PINCH-3), LIMS3, PINCH3

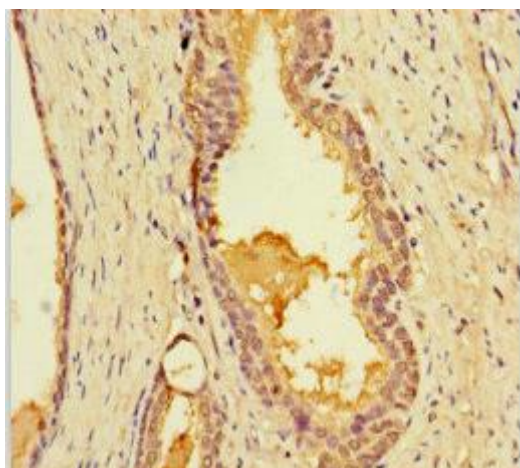
Immunogen:

Recombinant Human LIM and senescent cell antigen-like-containing domain protein 3 protein (1-117AA).

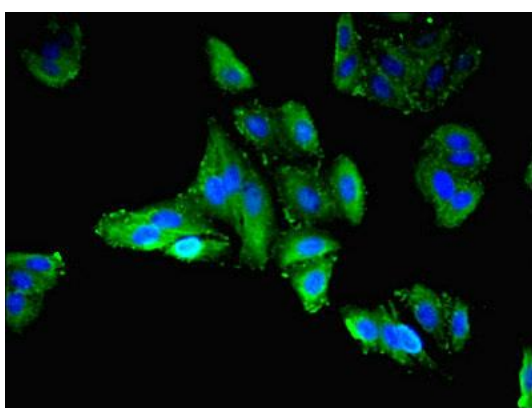
Storage:

Preservative: 0.03% Proclin 300. Constituents: 50% Glycerol, 0.01M PBS, PH 7.4

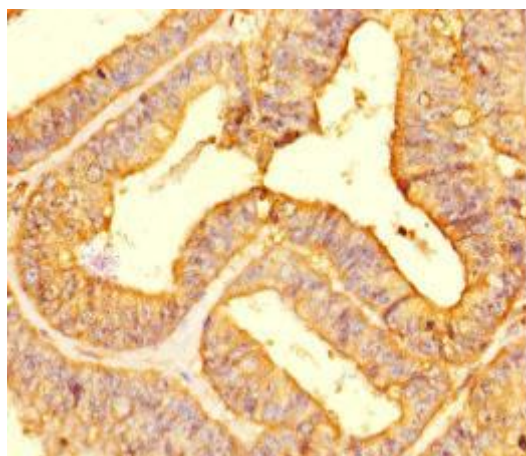
Product Images



Immunohistochemistry of paraffin-embedded human prostate cancer using PACO27969 at dilution of 1:100.



Immunofluorescent analysis of HepG2 cells using PACO27969 at dilution of 1:100 and Alexa Fluor 488-conjugated AffiniPure Goat Anti-Rabbit IgG(H+L).



Immunohistochemistry of paraffin-embedded human endometrial cancer using PACO27969 at dilution of 1:100.