

PACO27961

Product Information

Size:

50ug

Reactivity:

Human

Source:

Rabbit

Isotype:

IgG

Applications:

ELISA, IHC, IF

Recommended dilutions:

ELISA:1:2000-1:10000, IHC:1:20-1:200,
IF:1:50-1:200

Protein Background:

May act as receptor for class I MHC antigens. Ligand binding leads to the activation of eosinophils and to the release of RNASE2, IL4 and leukotriene C4.

Gene ID:

LILRA4

Uniprot

P59901

Synonyms:

Leukocyte immunoglobulin-like receptor subfamily A member 4 (CD85 antigen-like family member G) (Immunoglobulin-like transcript 7) (ILT-7) (CD antigen CD85g), LILRA4, ILT7

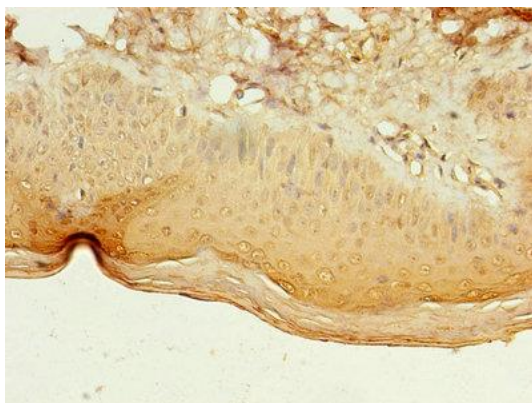
Immunogen:

Recombinant Human Leukocyte immunoglobulin-like receptor subfamily A member 4 protein (289-424AA).

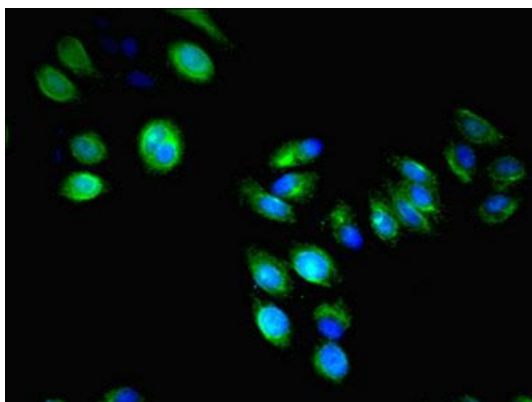
Storage:

Preservative: 0.03% Proclin 300. Constituents: 50% Glycerol, 0.01M PBS, PH 7.4

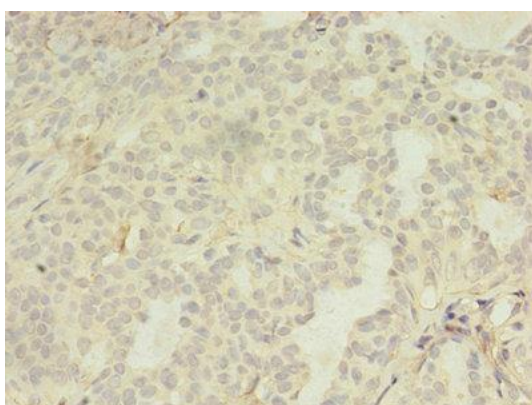
Product Images



Immunohistochemistry of paraffin-embedded human skin tissue using PACO27961 at dilution of 1:100.



Immunofluorescent analysis of HepG2 cells using PACO27961 at dilution of 1:100 and Alexa Fluor 488-conjugated AffiniPure Goat Anti-Rabbit IgG(H+L).



Immunohistochemistry of paraffin-embedded human breast cancer using PACO27961 at dilution of 1:100.