

Product Information

Size:

50ug

Reactivity:

Human

Source:

Rabbit

Isotype:

IgG

Applications:

ELISA, WB, IHC, IF

Recommended dilutions:

ELISA:1:2000-1:10000, WB:1:500-1:5000,
IHC:1:20-1:200, IF:1:50-1:200

Protein Background:

Acts as one of several non-catalytic accessory components of the cytoplasmic dynein 1 complex that are thought to be involved in linking dynein to cargos and to adapter proteins that regulate dynein function. Cytoplasmic dynein 1 acts as a motor for the intracellular retrograde motility of vesicles and organelles along microtubules. May play a role in changing or maintaining the spatial distribution of cytoskeletal structures. Binds and inhibits the catalytic activity of neuronal nitric oxide synthase. Promotes transactivation functions of ESR1 and plays a role in the nuclear localization of ESR1. Regulates apoptotic activities of BCL2L11 by sequestering it to microtubules. Upon apoptotic stimuli the BCL2L11-DYNLL1 complex dissociates from cytoplasmic dynein and translocates to mitochondria and sequesters BCL2 thus neutralizing its antiapoptotic activity.

Gene ID:

DYNLL1

Uniprot

P63167

Synonyms:

Dynein light chain 1, cytoplasmic (8 kDa dynein light chain) (DLC8) (Dynein light chain LC8-type 1) (Protein inhibitor of neuronal nitric oxide synthase) (PIN), DYNLL1, DLC1 DNCL1 DNCLC1 HDLC1

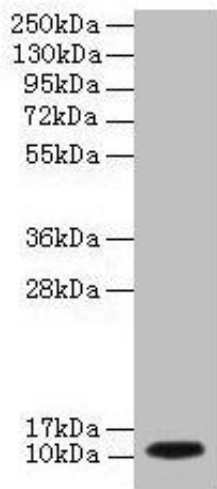
Immunogen:

Recombinant Human Dynein light chain 1, cytoplasmic protein (1-89AA).

Storage:

Preservative: 0.03% Proclin 300. Constituents: 50% Glycerol, 0.01M PBS, PH 7.4

Product Images



Western blot

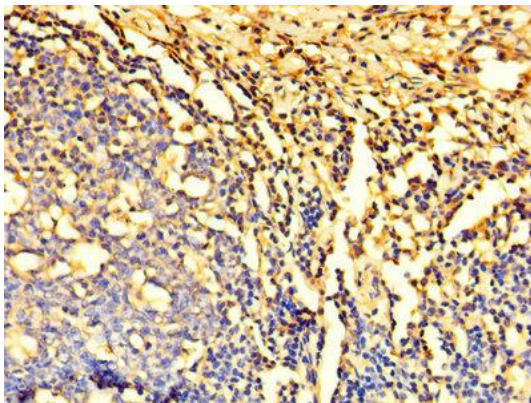
All lanes: DYNLL1 antibody at 2 μ g/ml + EC109 whole cell lysate

Secondary

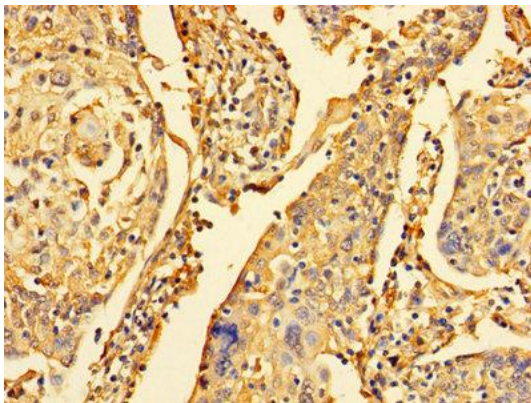
Goat polyclonal to rabbit IgG at 1/15000 dilution

Predicted band size: 11 kDa

Observed band size: 11 kDa



Immunohistochemistry of paraffin-embedded human tonsil tissue using PACO27921 at dilution of 1:100.



Immunohistochemistry of paraffin-embedded human cervical cancer using PACO27921 at dilution of 1:100.