

Product Information

Size:

50ug

Reactivity:

Human, Mouse

Source:

Rabbit

Isotype:

IgG

Applications:

ELISA, WB, IHC, IF

Recommended dilutions:

ELISA:1:2000-1:10000, WB:1:500-1:2000,
IHC:1:20-1:200, IF:1:50-1:200

Protein Background:

Actin-binding protein. Plays a role in the activation of T-cells in response to costimulation through TCR/CD3 and CD2 or CD28. Modulates the cell surface expression of IL2RA/CD25 and CD69.

Gene ID:

LCP1

Uniprot

P13796

Synonyms:

Plastin-2 (L-plastin) (LC64P) (Lymphocyte cytosolic protein 1) (LCP-1), LCP1, PLS2

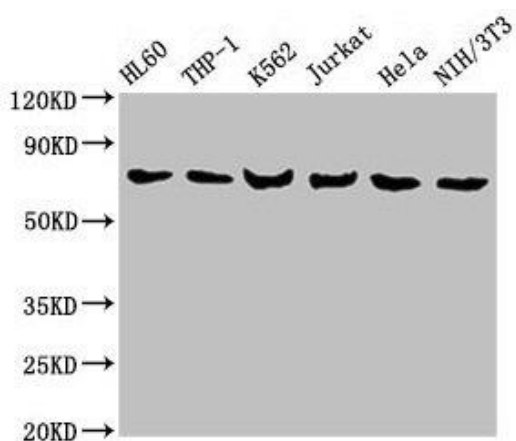
Immunogen:

Recombinant Human Plastin-2 protein (2-627AA).

Storage:

Preservative: 0.03% Proclin 300. Constituents: 50% Glycerol, 0.01M PBS, PH 7.4

Product Images



Western Blot

Positive WB detected in: HL60 whole cell lysate, THP-1 whole cell lysate, K562 whole cell lysate, Jurkat whole cell lysate, HeLa whole cell lysate, NIH/3T3 whole cell lysate

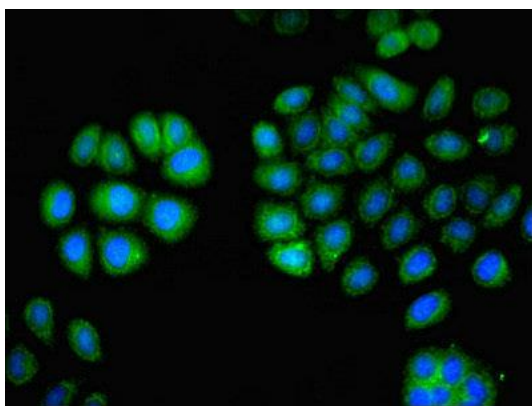
All lanes: LCP1 antibody at 8 μ g/ml

Secondary

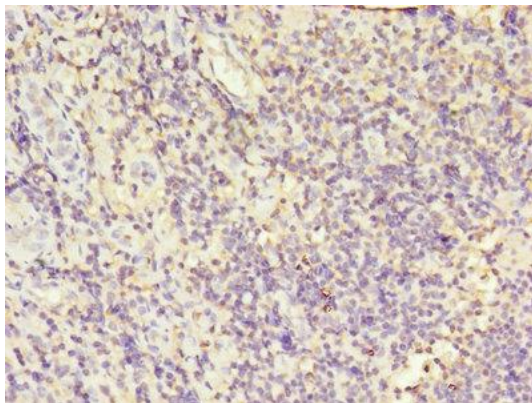
Goat polyclonal to rabbit IgG at 1/10000 dilution

Predicted band size: 71, 22 kDa

Observed band size: 71 kDa



Immunofluorescent analysis of A549 cells using PACO27917 at dilution of 1:100 and Alexa Fluor 488-conjugated AffiniPure Goat Anti-Rabbit IgG(H+L).



Immunohistochemistry of paraffin-embedded human tonsil tissue using PACO27917 at dilution of 1:100.