

PACO27881

Product Information

Size:

50ug

Reactivity:

Human

Source:

Rabbit

Isotype:

IgG

Applications:

ELISA, WB

Recommended dilutions:

ELISA:1:2000-1:10000, WB:1:500-1:5000

Protein Background:

The ADP-ribosylation factor (Arf) family comprises a group of structurally and functionally conserved 21 kDa proteins, which are members of the Ras superfamily of regulatory GTP-binding proteins. Arf is involved in intracellular protein traffic to and within the Golgi complex. Arf has a number of disparate activities including maintenance of organelle integrity, assembly of coat proteins, as a co-factor for cholera toxin and as an activator of phospholipase D. The Arf family is divided functionally into the Arf and the Arf-like (Arl) proteins. Arfs share more than 60% sequence identity, appear to be ubiquitous in eukaryotes, and are highly conserved evolutionarily.

Gene ID:

ARL2

Uniprot

P36404

Synonyms:

ADP-ribosylation factor-like protein 2, ARL2

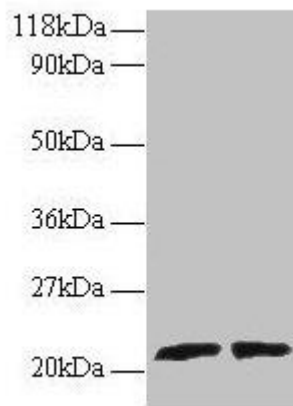
Immunogen:

Recombinant Human ADP-ribosylation factor-like protein 2 protein (19-184AA).

Storage:

Preservative: 0.03% Proclin 300. Constituents: 50% Glycerol, 0.01M PBS, PH 7.4

Product Images



Western blot

All lanes: ARL2 antibody at 2 μ g/ml

Lane 1: EC109 whole cell lysate

Lane 2: 293T whole cell lysate

Secondary

Goat polyclonal to rabbit IgG at 1/15000 dilution

Predicted band size: 21, 19 kDa

Observed band size: 21 kDa