

# KRT6A Antibody



PACO27865

---

## Product Information

**Size:**

50ug

**Reactivity:**

Human

**Source:**

Rabbit

**Isotype:**

IgG

**Applications:**

ELISA, WB, IHC

**Recommended dilutions:**

ELISA:1:2000-1:10000, WB:1:500-1:5000,  
IHC:1:20-1:200

**Protein Background:**

Heterodimer of a type I and a type II keratin. KRT6 isomers associate with KRT16 and/or KRT17. Interacts with TCHP.

**Gene ID:**

KRT6A

**Uniprot**

P02538

**Synonyms:**

Keratin, type II cytoskeletal 6A (Cytokeratin-6A) (CK-6A) (Cytokeratin-6D) (CK-6D) (Keratin-6A) (K6A) (Type-II keratin Kb6) (allergen Hom s 5), KRT6A, K6A KRT6D

**Immunogen:**

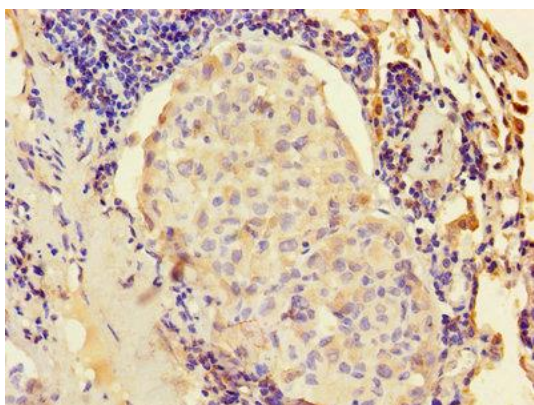
Recombinant Human Keratin, type II cytoskeletal 6A protein (2-564AA).

**Storage:**

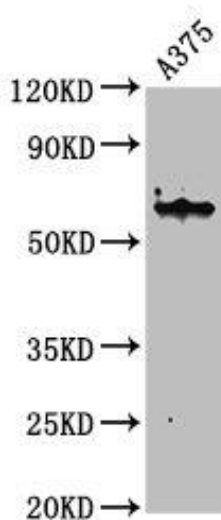
Preservative: 0.03% Proclin 300. Constituents: 50% Glycerol, 0.01M PBS, PH 7.4

## Product Images

---



Immunohistochemistry of paraffin-embedded human lung cancer using PACO27865 at dilution of 1:100.



Western Blot

Positive WB detected in: A375 whole cell lysate

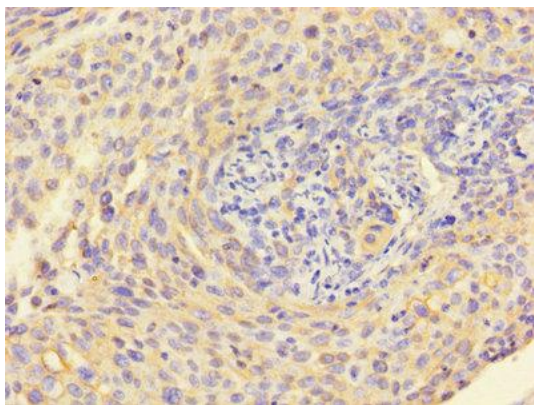
All lanes: KRT6A antibody at 4.6µg/ml

Secondary

Goat polyclonal to rabbit IgG at 1/50000 dilution

Predicted band size: 61 kDa

Observed band size: 61 kDa



Immunohistochemistry of paraffin-embedded human cervical cancer using PACO27865 at dilution of 1:100.