

KRT4 Antibody



PACO27861

Product Information

Size:

50ug

Reactivity:

Human

Source:

Rabbit

Isotype:

IgG

Applications:

ELISA, IHC, IF

Recommended dilutions:

ELISA:1:2000-1:10000, IHC:1:20-1:200,
IF:1:50-1:200

Protein Background:

Gene ID:

KRT4

Uniprot

P19013

Synonyms:

Keratin, type II cytoskeletal 4 (Cytokeratin-4) (CK-4) (Keratin-4) (K4) (Type-II keratin Kb4),
KRT4, CYK4

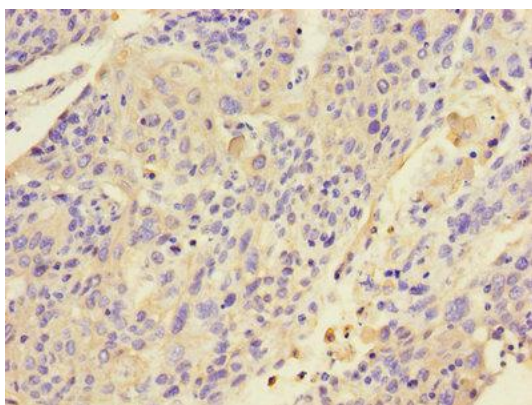
Immunogen:

Recombinant Human Keratin, type II cytoskeletal 4 protein (1-534AA).

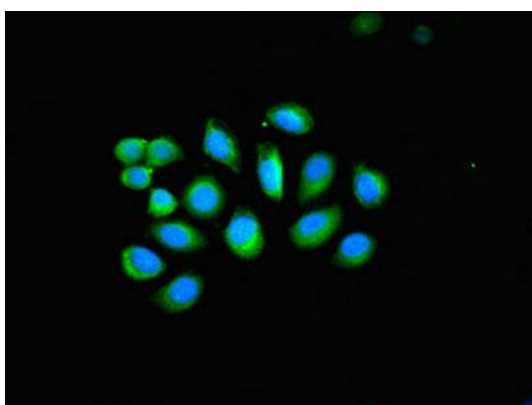
Storage:

Preservative: 0.03% Proclin 300. Constituents: 50% Glycerol, 0.01M PBS, PH 7.4

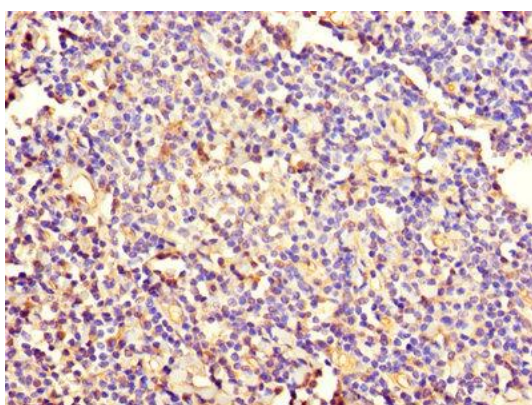
Product Images



Immunohistochemistry of paraffin-embedded human cervical cancer using PACO27861 at dilution of 1:100.



Immunofluorescent analysis of A549 cells using PACO27861 at dilution of 1:100 and Alexa Fluor 488-conjugated AffiniPure Goat Anti-Rabbit IgG(H+L).



Immunohistochemistry of paraffin-embedded human tonsil tissue using PACO27861 at dilution of 1:100.