

# KRT38 Antibody



PACO27857

---

## Product Information

**Size:**

50ug

**Reactivity:**

Human

**Source:**

Rabbit

**Isotype:**

IgG

**Applications:**

ELISA, WB

**Recommended dilutions:**

ELISA:1:2000-1:10000, WB:1:1000-1:5000

**Protein Background:**

**Gene ID:**

KRT38

**Uniprot**

O76015

**Synonyms:**

Keratin, type I cuticular Ha8 (Hair keratin, type I Ha8) (Keratin-38) (K38), KRT38, HHA8  
HKA8 KRTHA8

**Immunogen:**

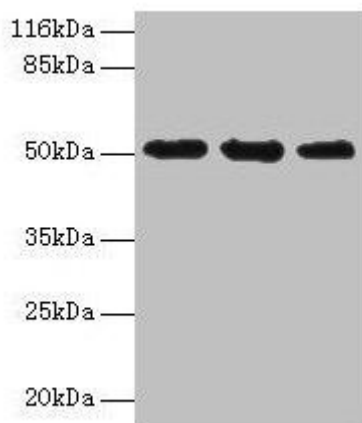
Recombinant Human Keratin, type I cuticular Ha8 protein (2-456AA).

**Storage:**

Preservative: 0.03% Proclin 300. Constituents: 50% Glycerol, 0.01M PBS, PH 7.4

## Product Images

---



### Western blot

All lanes: KRT38 antibody at 2 $\mu$ g/ml

Lane 1: MCF-7 whole cell lysate

Lane 2: Hela whole cell lysate

Lane 3: HepG2 whole cell lysate

Secondary

Goat polyclonal to rabbit IgG at 1/10000 dilution

Predicted band size: 51 kDa

Observed band size: 51 kDa