

KRT10 Antibody



PACO27845

Product Information

Size:

50ug

Reactivity:

Human

Source:

Rabbit

Isotype:

IgG

Applications:

ELISA, WB, IHC, IF

Recommended dilutions:

ELISA:1:2000-1:10000, WB:1:500-1:2000,
IHC:1:20-1:200, IF:1:50-1:200

Protein Background:

Gene ID:

KRT10

Uniprot

P13645

Synonyms:

Keratin, type I cytoskeletal 10 (Cytokeratin-10) (CK-10) (Keratin-10) (K10), KRT10, KPP

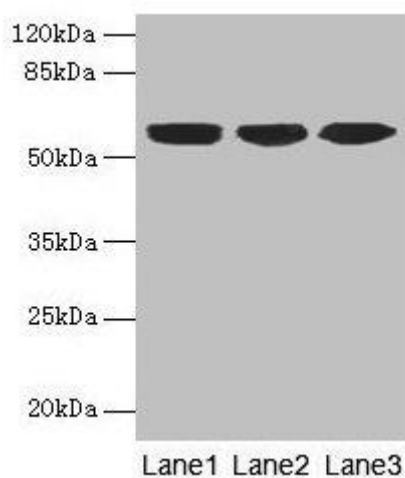
Immunogen:

Recombinant Human Keratin, type I cytoskeletal 10 protein (1-584AA).

Storage:

Preservative: 0.03% Proclin 300. Constituents: 50% Glycerol, 0.01M PBS, PH 7.4

Product Images



Western blot

All lanes: KRT10 antibody at 6 μ g/ml

Lane 1: A431 whole cell lysate

Lane 2: HepG2 whole cell lysate

Lane 3: MCF-7 whole cell lysate

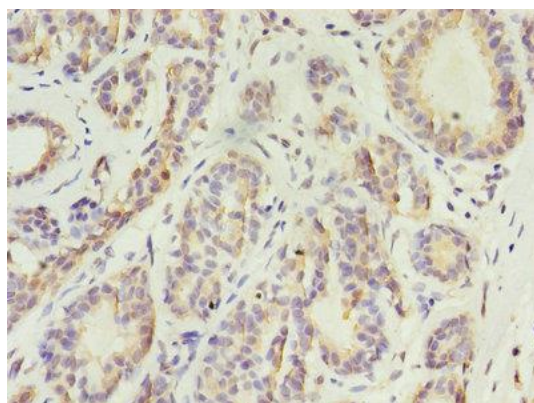
Secondary

Goat polyclonal to rabbit IgG at 1/10000 dilution

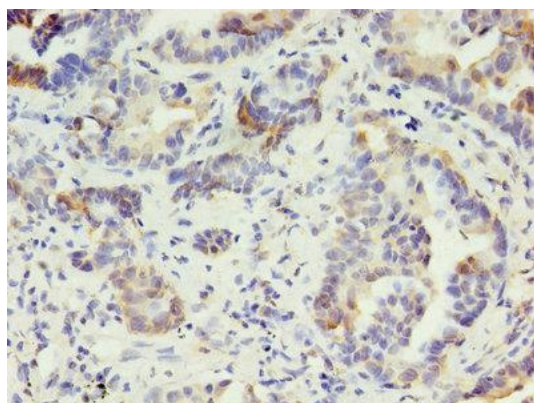
Predicted band size: 59 kDa

Observed band size: 59 kDa

.



Immunohistochemistry of paraffin-embedded human breast cancer using PACO27845 at dilution of 1:100.



Immunohistochemistry of paraffin-embedded human lung cancer using PACO27845 at dilution of 1:100.