

FAM234B Antibody



PACO27793

Product Information

Size:

50ug

Reactivity:

Human

Source:

Rabbit

Isotype:

IgG

Applications:

ELISA, WB, IHC, IF

Recommended dilutions:

ELISA:1:2000-1:10000, WB:1:1000-1:5000,
IHC:1:20-1:200, IF:1:50-1:200

Protein Background:**Gene ID:**

FAM234B

Uniprot

A2RU67

Synonyms:

Protein FAM234B, FAM234B, KIAA1467

Immunogen:

Recombinant Human Protein FAM234B protein (401-622AA).

Storage:

Preservative: 0.03% Proclin 300. Constituents: 50% Glycerol, 0.01M PBS, PH 7.4

Product Images



Western blot

All lanes: FAM234B antibody at 6µg/ml + Human placenta tissue

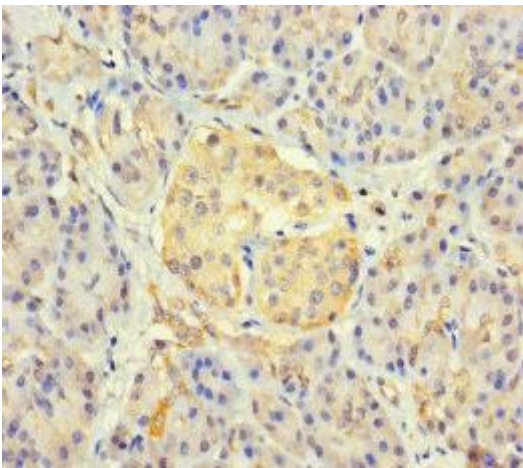
Secondary

Goat polyclonal to rabbit IgG at 1/10000 dilution

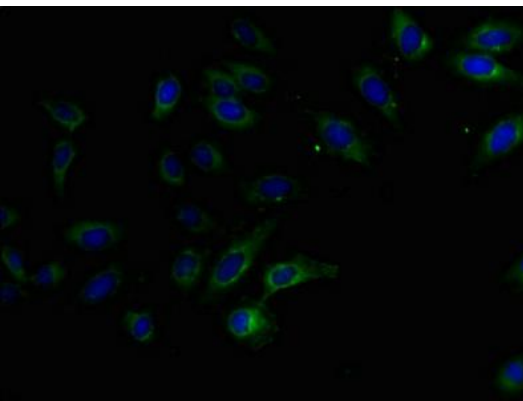
Predicted band size: 68 kDa

Observed band size: 68 kDa

.



Immunohistochemistry of paraffin-embedded human pancreatic tissue using PACO27793 at dilution of 1:100.



Immunofluorescent analysis of HeLa cells using PACO27793 at dilution of 1:100 and Alexa Fluor 488-conjugated AffiniPure Goat Anti-Rabbit IgG(H+L).