

Product Information

Size:

50ug

Reactivity:

Human

Source:

Rabbit

Isotype:

IgG

Applications:

ELISA, IHC, IF

Recommended dilutions:

ELISA:1:2000-1:10000, IHC:1:20-1:200,
IF:1:50-1:200

Protein Background:

Required for the development and maturation of T-cells, its function being essential for the late stages of thymocyte development. Plays a role in T-cell antigen receptor (TCR)-mediated activation of the ERK and NFAT signaling pathways, possibly by serving as a scaffolding protein that promotes the assembly of the LAT signalosome in thymocytes. May play a role in the regulation of inositol 1,4,5-trisphosphate receptor-mediated Ca(2+) release and mitochondrial Ca(2+) uptake via the mitochondria-associated endoplasmic reticulum membrane (MAM) compartment.

Gene ID:

TESPA1

Uniprot

A2RU30

Synonyms:

Protein TESPA1 (Thymocyte-expressed positive selection-associated protein 1), TESPA1, KIAA0748

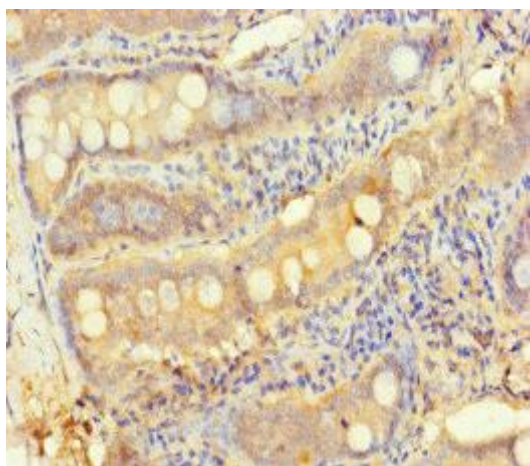
Immunogen:

Recombinant Human Protein TESPA1 protein (251-521AA).

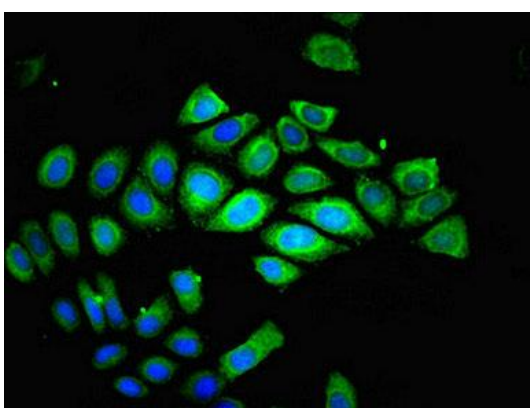
Storage:

Preservative: 0.03% Proclin 300. Constituents: 50% Glycerol, 0.01M PBS, PH 7.4

Product Images



Immunohistochemistry of paraffin-embedded human small intestine tissue using PACO27785 at dilution of 1:100.



Immunofluorescent analysis of A549 cells using PACO27785 at dilution of 1:100 and Alexa Fluor 488-conjugated AffiniPure Goat Anti-Rabbit IgG(H+L).