

Keap1 Antibody



PACO27766

Product Information

Size:

50ug

Reactivity:

Mouse, Human

Source:

Rabbit

Isotype:

IgG

Applications:

ELISA, WB

Recommended dilutions:

ELISA:1:2000-1:10000, WB:1:500-1:2000

Protein Background:

Acts as a substrate adapter protein for the E3 ubiquitin ligase complex formed by CUL3 and RBX1 and targets NFE2L2/NRF2 for ubiquitination and degradation by the proteasome, thus resulting in the suppression of its transcriptional activity and the repression of antioxidant response element-mediated detoxifying enzyme gene expression. Retains NFE2L2/NRF2 and may also retain BPTF in the cytosol. Targets PGAM5 for ubiquitination and degradation by the proteasome.

Gene ID:

Keap1

Uniprot

Q9Z2X8

Synonyms:

Kelch-like ECH-associated protein 1 (Cytosolic inhibitor of Nrf2) (INrf2), Keap1, Inrf2, Kiaa0132

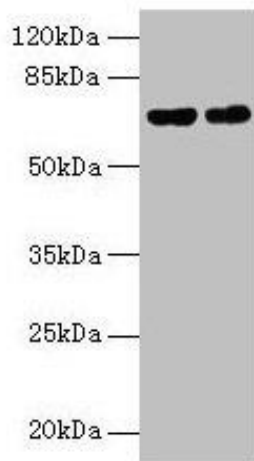
Immunogen:

Recombinant Mouse Kelch-like ECH-associated protein 1 protein (1-624AA).

Storage:

Preservative: 0.03% Proclin 300. Constituents: 50% Glycerol, 0.01M PBS, PH 7.4

Product Images



Western blot

All lanes: Keap1 antibody at 9 μ g/ml

Lane 1: 293T whole cell lysate

Lane 2: Jurkat whole cell lysate

Secondary

Goat polyclonal to rabbit IgG at 1/10000 dilution

Predicted band size: 70 kDa

Observed band size: 70 kDa

.