

PACO27757

Product Information

Size:

50ug

Reactivity:

Human

Source:

Rabbit

Isotype:

IgG

Applications:

ELISA, WB, IF

Recommended dilutions:

ELISA:1:2000-1:10000, WB:1:1000-1:5000,
IF:1:50-1:200

Protein Background:

IFN-induced antiviral protein that mediate cellular innate immunity to at least three major human pathogens, namely influenza A H1N1 virus, West Nile virus, and dengue virus by inhibiting the early step(s) of replication. Plays a key role in the antiproliferative action of IFN-gamma either by inhibiting the ERK activation or by arresting cell growth in G1 phase in a p53-dependent manner. Implicated in the control of cell growth. Component of a multimeric complex involved in the transduction of antiproliferative and homotypic adhesion signals.

Gene ID:

IFITM1

Uniprot

P13164

Synonyms:

Interferon-induced transmembrane protein 1 (Dispanin subfamily A member 2a) (DSPA2a) (Interferon-induced protein 17) (Interferon-inducible protein 9-27) (Leu-13 antigen) (CD antigen CD225), IFITM1, CD225 IFI17

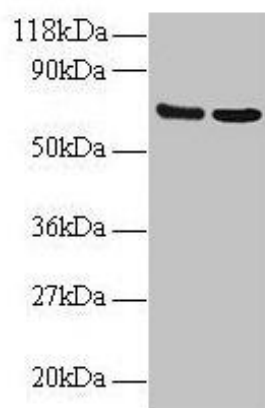
Immunogen:

Recombinant Human Interferon-induced transmembrane protein 1 protein (1-36AA).

Storage:

Preservative: 0.03% Proclin 300. Constituents: 50% Glycerol, 0.01M PBS, PH 7.4

Product Images



Western blot

All lanes: IFITM1 antibody at 2 μ g/ml

Lane 1: EC109 whole cell lysate

Lane 2: 293T whole cell lysate

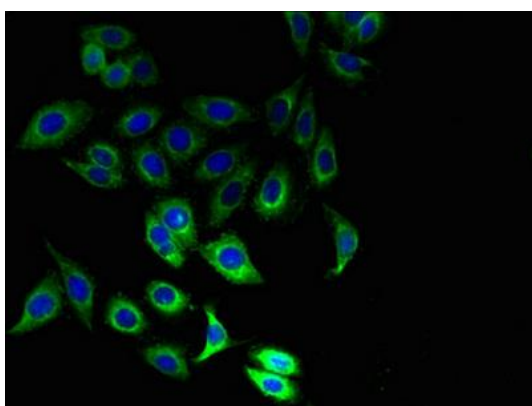
Secondary

Goat polyclonal to rabbit IgG at 1/15000 dilution

Predicted band size: 14 kDa

Observed band size: 70 kDa

.



Immunofluorescent analysis of HeLa cells using PACO27757 at dilution of 1:100 and Alexa Fluor 488-conjugated AffiniPure Goat Anti-Rabbit IgG(H+L).