

Itgb1 Antibody



PACO27689

Product Information

Size:

50ug

Reactivity:

Mouse, Human

Source:

Rabbit

Isotype:

IgG

Applications:

ELISA, WB, IF

Recommended dilutions:

ELISA:1:2000-1:10000, WB:1:1000-1:5000,
IF:1:50-1:200

Protein Background:

Gene ID:

Itgb1

Uniprot

P09055

Synonyms:

Integrin beta-1 (Fibronectin receptor subunit beta) (VLA-4 subunit beta) (CD antigen CD29), Itgb1

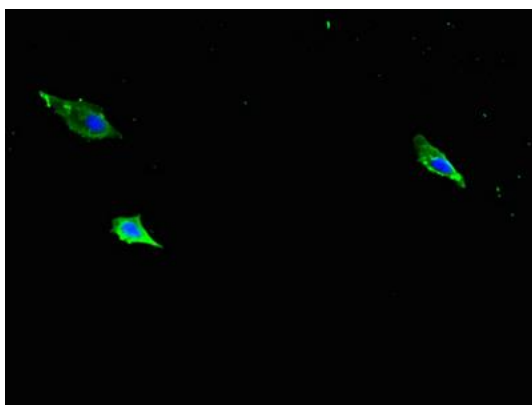
Immunogen:

Recombinant Mouse Integrin beta-1 protein (21-728AA).

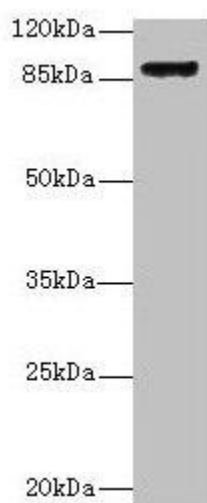
Storage:

Preservative: 0.03% Proclin 300. Constituents: 50% Glycerol, 0.01M PBS, PH 7.4

Product Images



Immunofluorescent analysis of HeLa cells using PACO27689 at dilution of 1:100 and Alexa Fluor 488-conjugated AffiniPure Goat Anti-Rabbit IgG(H+L).



Western blot

All lanes: Itgb1 antibody at 16 μ g/ml + U87 whole cell lysate

Secondary

Goat polyclonal to rabbit IgG at 1/10000 dilution

Predicted band size: 89 kDa

Observed band size: 89 kDa