

PACO27681

Product Information

Size:

50ug

Reactivity:

Human

Source:

Rabbit

Isotype:

IgG

Applications:

ELISA, WB, IHC, IF

Recommended dilutions:

ELISA:1:2000-1:10000, WB:1:500-1:2000,
IHC:1:20-1:200, IF:1:50-1:200

Protein Background:

Integrin alpha-L/beta-2 is a receptor for ICAM1, ICAM2, ICAM3 and ICAM4. It is involved in a variety of immune phenomena including leukocyte-endothelial cell interaction, cytotoxic T-cell mediated killing, and antibody dependent killing by granulocytes and monocytes.

Gene ID:

ITGAL

Uniprot

P20701

Synonyms:

Integrin alpha-L (CD11 antigen-like family member A) (Leukocyte adhesion glycoprotein LFA-1 alpha chain) (LFA-1A) (Leukocyte function-associated molecule 1 alpha chain) (CD antigen CD11a), ITGAL, CD11A

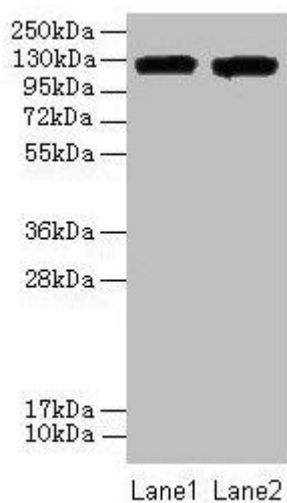
Immunogen:

Recombinant Human Integrin alpha-L protein (201-500AA).

Storage:

Preservative: 0.03% Proclin 300. Constituents: 50% Glycerol, 0.01M PBS, PH 7.4

Product Images



Western blot

All lanes: ITGAL antibody at 8 μ g/ml

Lane 1: A549 whole cell lysate

Lane 2: HepG2 whole cell lysate

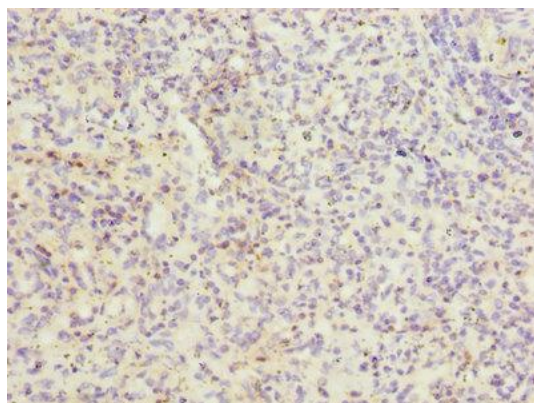
Secondary

Goat polyclonal to rabbit IgG at 1/10000 dilution

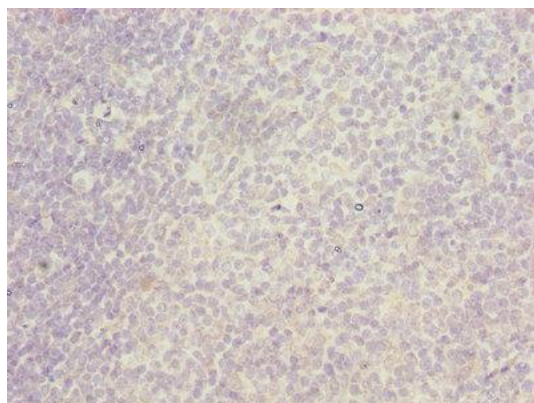
Predicted band size: 129, 135, 120 kDa

Observed band size: 129 kDa

.



Immunohistochemistry of paraffin-embedded human spleen tissue using PACO27681 at dilution of 1:100.



Immunohistochemistry of paraffin-embedded human tonsil tissue using PACO27681 at dilution of 1:100.